

Delivered to 13,000, Door to Door

SUMMER 2026

Potters Bar

COMMUNITY NEWS

Hertsmere Draft Local Plan 2026

A
Not-for-Profit
Publication

Produced
and delivered
by volunteers

Supporting
the local
community and
businesses

STOP PRESS STOP PRESS STOP PRESS

On 15th June Hertsmere Borough Council received a Government 'designation' order (Section 62A Town and Country Planning Act 1990). Developers will now be able to make future large planning applications directly to the Secretary of State rather than through the local council. More detail on this alarming news on both the Potters Bar Society and the Council websites.

Hertsmere Council has recently finished a consultation exercise about the proposed new Local Plan, but in a very complicated fashion online. However, if you missed it, you can still make your views known to local councillors or by emailing the planning department at Hertsmere. The updated version of this draft Plan is due this summer, but with limited facility to comment, and it will then go to the government for approval. It will provide the blueprint for development, especially housing, in Hertsmere over the next 15 years. If there is no local plan it is a free-for-all. Anyone can put in for planning permission on any piece of land, expecting it to be passed. Having a plan lays down where the council would favour building.

Since the election two years ago housing targets have increased considerably, and the Council is under pressure to meet them, but many people think the figures for Hertsmere (and Potters Bar) are

too high and unrealistic. We do need more homes and the draft Plan highlights plots for almost 2,000 houses within the town boundary. However, what people are concerned about are other areas in the draft which are outside the town on the protective Green Belt. These are the golf course and the Warrengate Farm fields next to the Furzefield Centre, and two other areas, behind Dove Lane and Park Avenue which are very close to the M25 with its noise and pollution. For 70 years the Green Belt has prevented London sprawling out to engulf Potters Bar and then to Brookmans Park, Hatfield and beyond. With this draft Plan, Potters Bar, known for sitting in countryside, is badly threatened. It brings into play other fears about food security if farmland is built over and overdevelopment in the south of England, at the expense of the north. What are your views – please tell us (Chair: Paul on 07906 505167) and importantly, Hertsmere Council.

The Potters Bar Society

For up-to-the-minute news, please go to www.pottersbarcommunitynews.co.uk

Distributed in Potters Bar, Little Heath, South Mimms, Ridge, Northaw, Brookmans Park, Cuffley and Welham Green



Contacts for
Potters Bar
Community News

www.pottersbarcommunitynews.co.uk

Website sponsored jointly by the Rotary Clubs of Potters Bar and Brookmans Park

Chairman

John Connell 01707 851445

Joint Editors

Debbie Usher and John Connell
editor@pottersbarcommunitynews.co.uk

Advertising

Debbie Usher 07947 822544
advertising@pottersbarcommunitynews.co.uk

What's On

Sue Weaver
susan.weaver4@ntlworld.com

Schools

Diane Thompson 01707 857246

Distribution

Peter Weaver 01707 850147

Design

GREENGilbert 07956 222296

Printing

Ushers Print & Design Ltd 01707 851242

Treasurer

Margaret O'Donnell 01707 652248

Editorial Team

Vivien Arey 07880 726766
Gill Connell 01707 851445
John Godfrey 01707 645955
Jon Holland 07948 718178
Rosamund Riddle 01707 645490
Jerry Rudd 07850 326286

Potters Bar Community News

welcomes contributions for publication from individuals and community groups. Where there is a linked commercial, political or individual interest in items for publication, the managing committee reserves all editorial rights. *Potters Bar Community News* does not accept responsibility for the accuracy of information contained in published items or views expressed in those items.

Welcome to our Summer edition

A brief welcome this time as I needed to create as much space as possible to include the abundance of interesting articles received. Hope you enjoy reading them as much as I did – proof once again that we do live in a caring, vibrant community.

Best wishes
John Connell

Interested in volunteering?

Ever thought of giving some of your time to help others in the community? Also look here for items wanted by organisations; you may be able to help them.

If you are a local organisation or charity and are looking for volunteers or looking for items for your group, why not email me at editor@pottersbarcommunitynews.co.uk?

Volunteer at Potters Bar Community Hospital

The Friends of Potters Bar Community Hospital are looking for volunteers to help with the tea or coffee trolley in reception for patients, visitors and staff. If you could manage one morning a month for 2–3 hours to help with the service, please contact Elaine on **07759 552194**.

Volunteer piano player needed

Music to gladden the heart! Join our team to bring joy and melody to the lives of older people across our community.

If you can volunteer your time to play the piano, we will provide a grateful audience.

Sixty Plus charity in the Wyllyotts centre, Potters Bar would like to hear from you. Telephone **01707 643602** (Tuesday and Thursday) or email sixtypluscentre@gmail.com.

www.sixtypluslunchclub.co.uk

Volunteer Opportunities

Do you want to make a difference to women affected by sexual violence? We are seeking compassionate female volunteers to train as Rape Crisis Support Specialists (RCSS), providing emotional support by telephone, video call and face-to-face.

We offer:

- Full specialist training
- Ongoing supervision and support
- Valuable experience and skill development
- A supportive team environment

We ask:

- One 1-hour support session every two weeks
- Availability on Thursday evenings for training and supervision
- Empathy, reliability and commitment

For an information pack and application details, please visit <https://tinyurl.com/VolunteerHRC>.



The Twelve Apostles Church Food Bank

Since January 2021 The Twelve Apostles Church Food Bank has provided an essential weekly

food parcel for a growing number of elderly people and struggling families throughout the Hertfordshire Area. Referrals come through local primary and secondary schools, Citizens Advice, social services, GP surgeries, community centres and, increasingly, we process on-line referrals as well. Our large team of volunteers (and volunteer drivers) pack and deliver food bags, all over the county. Their dedication and commitment are quite extraordinary, and we are extremely indebted to each of them.

The UK cost-of-living crisis is biting hard. To move this ministry into the second half of 2026, we need URGENT food and financial support. Food donations can be brought to the church Monday-Saturday 10am-3pm. If you wish to make a financial donation to improve the lives of local people, young and old, in a direct and practical way, please contact us as shown below.

If you would like to visit our operation and to see our food bank in action for yourself, pop in at 10am on any Wednesday morning. We cannot wait to meet you!

On behalf of the Food Bank Team, thank you so much.
Stella Spyrou 01707 647146, 12apostlesfb@gmail.com or www.12apostles.co.uk. The Twelve Apostles Orthodox Church, Kentish Lane, Brookmans Park, AL9 6NG. Registered UK Charity Number 1108369.

Wednesday Community Club - Please can you help?

The Wednesday Community Club, originally known as 'The Darby & Joan Friday Circle', has been serving the community for over 61 years, meeting at Potters Bar Baptist Church. We meet on a Wednesday from 2-4pm every month, apart from August and breaks at Easter and Christmas, and we have a varied programme of events.

We have for a number of years availed ourselves of the services of 'Potters Bar Assisting with Disabilities' minibus which provides transport for a number of our members, most of whom would otherwise spend the afternoon on their own. This service relies on volunteer drivers and escorts, and this is where I hope that you can help.

This July Peter and Christine, who have given their time since September 2019, have to stand down and will be greatly missed for their caring and happy dispositions. The rota is on a three-weekly basis to drive a ford transit minibus with tail lift. It can be driven on a full car driving licence, obviously conditions do apply but gender does not.

If any of you reading this feel that you can offer your services, I know our club members will be eternally grateful and so will I. Please contact me in the evening on 01707 655599 and I will look forward to hearing from you.

Roger Gray, Club Leader. Secretary Eve Cuthbert 07855 455212 or email evectu@sky.com.

Slimming World



feel *real* good

with **Dan**
Monday AM
9:30 & 11:00
KCM Church
Mutton Ln
EN6 3AS



Start your journey today

with **Mel**
Monday PM
5:30 & 7:00
KCM Church
Mutton Ln
EN6 3AS

with **Mel**
Thursday PM
5:30
KCM Church
Mutton Ln
EN6 3AS

with **Mel**
Saturday AM
8:00 & 9:30
Wayside Jubilee
Centre
EN6 5NE



Dan 07522 594 265
Mel 07941 495 767

less than
£6*
a week when you
join today!

new!
GLP-1
support



*When you commit to 6 or 12 weeks of group support. Price shown is RRP. Visit our website for terms and conditions.

Where community, care and companionship come together



For more than 75 years, Sixty Plus (Potters Bar and South Mimms) has been a cornerstone of our community, supporting residents aged 60+ to stay connected, active, and well.

Founded in February 1948 as the Potters Bar Old Folks Welcome Club, the charity was created to provide companionship for older people experiencing loneliness. What began with around 80 members meeting twice weekly quickly grew to over 200, expanding across Potters Bar and evolving over the decades. Throughout its history, Sixty Plus has offered not just social opportunities, but a sense of belonging – through lunch clubs, outings, talks, and practical support. Generations of local residents have benefited from its warm and welcoming environment.

As with many organisations, Covid-19 had a significant impact. Temporary closures and reduced attendance left many feeling isolated, and rebuilding our membership has taken time. Today, we are rebuilding and looking ahead. We run welcoming sessions where members enjoy a hot meal, conversation, and activities in a friendly, supportive environment. We are open Tuesdays and Thursdays (9am–2pm) at the Wyllyotts Centre, with transport and activities including bingo, guest speakers, and trips.

Our ambition is to grow into a true community hub for everyone aged 60+, promoting wellbeing, reducing isolation, and offering new services. We are here for you, but we need your help. To thrive, we need new members, volunteers, and financial support. Whilst we are grateful for support from Hertsmere and Hertfordshire Councils, more is needed.

To find out more, please visit our website www.sixtypluslunchclub.co.uk. Alternatively, you can contact us via email sixtypluscentre@gmail.com or by phone 01707 643602 (Tuesdays and Thursdays only), **Sixty Plus Centre, The Wyllyotts Centre, Potters Bar, EN6 2HN.**

HMOs in Potters Bar - Your Community, Your Say

Houses in Multiple Occupation (HMOs) remain one of the most significant issues affecting parts of Potters Bar, with many residents concerned about their impact on neighbourhood character, parking, waste and community cohesion. As a local Conservative councillor, I understand these concerns both politically and personally, having lived next door to a property subject to an HMO proposal.

For several years, we have campaigned for stronger planning controls. Thanks to sustained efforts by opposition councillors, residents and community groups, progress has now been made towards introducing an Article 4 Direction across parts of Potters Bar. This would require planning permission before a family home can be converted into an HMO. We have also strengthened amenity standards to improve living conditions for tenants.

If approved, the Article 4 Direction is expected to take effect in May 2027. However, we continue to press for earlier implementation and for an additional licensing scheme to ensure better oversight.

My thanks go to the HMO Development in Potters Bar Group and the many residents who have given their time and energy. Their evidence gathering, meeting attendance and consultation responses have been vital in ensuring local voices are heard. Residents wishing to stay involved can join the group's Facebook page or contact me directly.

Our aim is clear: to support responsible landlords, maintain high standards for tenants and prevent the overconcentration of HMOs in family residential streets. By working together, we can protect the character and quality of life of our neighbourhoods.

For concerns, contact:

- Planning – Enforce.Planning@hertsmere.gov.uk
- Waste/licensing/housing – Private.Sector@hertsmere.gov.uk
- Environmental health – Environmental.Health@hertsmere.gov.uk
- General issues – Customer.Services@hertsmere.gov.uk
- Antisocial behaviour – 101

You can also contact me directly at Cllr.Lynette.Sullivan@hertsmere.gov.uk.



Looking for rehabilitation in your home to help you recover after illness & injury?

We help adults & children across North London & Hertfordshire reach their goals.

Conditions we treat include:

- Stroke | Brain Injury
- Alzheimer's & Dementia | Falls
- Fractures | Bone & Joint Surgeries
- Cancer | Learning Disabilities
- Long Term Neurological Conditions
- Elderly Rehabilitation





Physiotherapy Rehabilitation Services

Contact us to discuss your needs

07738 616 950

physiorehabservices.com

Find me on



Rated 5★ 




Little Heath Window Cleaning

Local, reliable, regular service.

Windows | Gutters | Soffits

CALL SIMON
07562 136619

Just Gutters Potters Bar

Gutter clearing service.
Potters Bar and surrounding area.
Professional service.

CALL
07562 136619
FOR A QUOTE

Local pupils win

Two pupils from local schools were successful in the latest District round of the annual Rotary youth competitions. Having won the local beat, Queenswood School pupil, Elly, won the Senior category of the Young Photographer competition for the Herts, Beds and Bucks area with her photograph of sunlight touching trees, taken within the school grounds. Picture shows Elly receiving her trophy from Thomas Chacko and Neil Kirby of Brookmans Park Rotary and Queenswood Head, Jo Cameron.



The judges commented, “Her woodland scene beautifully captures light filtering through the trees, creating a sense of tranquillity, warmth, and fleeting natural beauty.

The photograph draws the viewer through multiple layers of interest, from daffodils and textured tree bark to lush greenery and flowering bushes, all unified by the soft light touching the landscape”.

And in the Young Artist competition, Senna from Chancellors School won the Intermediate section and her entry also now goes forward to the national finals. The theme for both competitions was “Happiness in Nature” and Senna produced an image of a fox set in the woods next to her garden, an area under threat from development making it especially poignant. Senna explained, “I love this space and the foxes see it as their happy home”. Editor: Elly’s and Senna’s pictures are shown in the gallery on our website.

These competitions are part of a number that take place each year and are open to students aged up to 18 years of age from schools and community groups. In addition to Young Photographer and Young Artist, there are also competitions for Young Chef, Young Writer and Youth Speaks: A debate.

Competitions in the local area are organised by the Rotary Clubs of Brookmans Park, Hatfield, Potters Bar and Welwyn Garden City. Anyone interested please contact youth@brookmansparkrotary.org.uk.

Herts Young Homeless (HYH)

Youth homelessness is rising across the UK. Last year, 2,376 young people approached their local authority in Hertfordshire for support, though many go unrecorded – sofa surfing, staying in unsafe places or moving between temporary arrangements. Research reveals that 54% of adults who sleep rough first became homeless before age 25.

Early intervention is vital in breaking the cycle. Where safe, a young person’s family home is the best place for them to thrive. Alternatives, homelessness or entry into care, are linked to poor long-term outcomes, including higher risk of mental ill-health, unemployment, and housing instability. Family breakdown remains the leading cause of youth homelessness.

At HYH, 80% of 16–24 year olds seeking help do so due to conflict or breakdown at home. These pressures can escalate without timely support, leading to crisis and homelessness. HYH’s services are specifically designed to intervene early, stabilise families, and prevent homelessness before it begins.

HYH has launched a new five-year strategy with ambitious plans to help over 60,000 young people by 2030, aiming to build strong community partnerships to achieve this. Developments include broadening education into primary schools to signpost young people to the service; piloting ‘Upstream’ in schools, an innovative early-identification service proven elsewhere, helping to spot those at risk of homelessness for earlier intervention; opening a second Future Roots house (supported housing to help young people transition to independent living); and launching an Ai-driven 24/7 live chat to signpost more young people to find support.



Saturday mornings at Gracewood Academy

pbcms.org.uk

Famous People from Potters Bar - Acker Bilk

In earlier articles I have written about the Byng family – Admiral John, who was famously executed for ‘failing to do his utmost’, and Julian, a distinguished general. Potters Bar, however, has also been home to many other notable figures, including the celebrated clarinettist Bernard Stanley ‘Acker’ Bilk.

Born in Somerset in 1929, he acquired the nickname ‘Acker’, local slang for mate. During National Service he learned the clarinet, famously crafting his first reed from scrap wood because the instrument he was given lacked one. After leaving the army, he worked as a blacksmith before joining the 1950s jazz circuit. He formed a band that played in clubs across Britain and Germany, achieving early success with Summer Set, a playful nod to his home county. In 1961 they performed at the Royal Variety Performance.

His greatest success came soon after with Stranger on the Shore, which stayed in the UK charts for over a year, reached number one in America, and sold more than a million copies. Throughout the 1960s the band toured the cabaret circuit and continued releasing albums. Bilk also appeared in two feature films, including *Band of Thieves*, which showcased the band performing inside a prison. In 1977 they provided interval entertainment at the Eurovision Song Contest, and in 1978 enjoyed their final top-20 hit with *Evergreen*. He was appointed MBE in 2001.

Acker lived for many years in The Avenue, Potters Bar, with his wife Jean and their children. His son Pete recalls sledging trips on Potters Bar Golf Course, although Acker himself avoided the sledge, having lost part of a finger in a childhood accident. Other fond memories include fishing in the pond, kite flying, and family walks with their dogs. He loved the countryside and was knowledgeable about trees and plants.

He later retired to Somerset, where he died in 2014 aged 85. My thanks go to Pete Bilk for his help with this article.

Jerry Rudd



PATIO & DRIVEWAY SPECIALISTS EST 25 YEARS

01707 655511

- UNIQUE DRIVEWAYS & PATIOS
- STAIN RESISTANT & WEED FREE
- DOMESTIC & COMMERCIAL
- STEPS FENCING PONDS

www.evergreenlandscapes.co.uk
 RYDAL MOUNT YARD, BAKER STREET, POTTERS BAR



What goes around comes around

A little-known fact about Potters Bar is that, exactly a century ago, Potters Bar Urban District Council was faced with a difficult choice. Plans were produced to extend The Avenue and surrounding roads to create an

exclusive Garden Village which would have also spanned the Railway line into the area that is now the Cranborne Industrial Estate. At the same time there was a lobby to lay out a golf course on the same footprint, as it was believed that this would be a great draw to the middle classes contemplating moving out of London for some fresh air and leisure.

A map, recently found in Potters Bar Museum, has the first proposal superimposed with the golf course and is illustrated here. The rest is history, with the Golf Course winning through. Now one hundred years later, there is a new scheme in hand to build housing on the site once again.

As part of his Duke of Edinburgh Gold Award, Aryan, a student at Dame Alice Owen’s School, recently joined us at the Museum and chose to work on a project that traces the process from 1926 to 2026 and his exhibit can be seen on display in the Museum.



Lochinver House, your child's priority pathway to Habs.
 Girls belong here, boys belong here, Lochinver House is where futures are built.
 Registration OPEN for Nursery, Reception & Year 2 places

01707 653064 | AMeir@lochinverhouse.com | www.lochinverhouse.com

POTTERS BAR EN6 1LW

Town Council - yes or no?

From 1st July to 23rd August you will be asked whether you want Hertsmere Council to create a Parish (Town) Council in Potters Bar. This is phase 2 of a consultation process (phase 1 closed 8th June) and is in preparation for the reorganisation of local government when Hertsmere Council and Hertfordshire County Council are due to disappear.

Potters Bar will be on the boundary of a much bigger, new local government area and decision-making will become more remote, possibly centred in Watford. Therefore the government favours the creation of town councils for local areas to help with local democracy. However, their powers are limited to such things as looking after allotments and parks and organising local events. They would be paid for by an extra charge on council tax. One question raised by us in Phase 1: would any Town Council also include Little Heath? What are the pros and cons to help you decide?

FOR

- It can be a focus or forum to discuss local matters.
- Carnival and Christmas lights could become its responsibility.
- A Parish Clerk would be a paid employee as a point of contact.
- Town views could be easily relayed to the larger organisation.

AGAINST

- An extra charge added to council tax.
- Powers are limited.
- Community and voluntary groups could be diminished.
- Political parties could dominate.

Lookout for the survey which you'll be asked to complete online, or by phone or you can ask for a paper copy. This is an important decision for the town, so please give your views either way. Contact Chair Paul on 07906 505167.

The Potters Bar Society

DENSHEDS

Quality Garden Buildings

www.densheds.co.uk Tel: 0208 449 5049



- All our Prices include Local Delivery & Installation
- Base Laying, Takedown & Disposal services
- UPVC, Double Glazed Garden Rooms & Summerhouses
- Standard Apex Sheds & Storage Sheds in stock

Enfield Garden Centre, Cattlegate Road,
Crews Hill, Enfield, EN2 9DJ

Should the fields opposite Potters Bar hospital be built on?

The Council said "No" in December 2025, but the builder (Bloor Homes) appealed, triggering a Public Inquiry held by a Planning Inspector. This took place in May, originally scheduled for 13 days as it is a controversial development. But the inquiry closed after only two days as Hertsmere Council at the last minute agreed with the builders that the land had become 'Grey' rather than Green. That opened the way for building.

This was all because the Council, as part of the consultation on the draft Local Plan, published a Green Belt Assessment, written by consultants, which assessed almost the whole of Hertsmere as 'Grey Belt' making 'a weak or no contribution to the purposes of the Green Belt'. It meant the Council became prey to Bloor Homes potentially claiming costs against them. At the Inquiry local resident groups representing Ashwood Road, Sunnybank and the Royds area along with the Potters Bar Society and the Campaign for the Preservation of Rural England were allowed to put their case against the development. We had good evidence to show the land is not suitable for building on and that it makes a strong contribution to the Green Belt by providing a substantial part of the gap between Potters Bar and Barnet. However, we are like the little boy in the story of *The Emperor's New Clothes*: everyone in power knows very well the land is Green Belt but they are pretending they see grey.

The Inspector will still make her report, but it has been called in for decision by the Secretary of State. He is Steve Reed MP, Secretary of State for Housing, Communities and Local Government. If you wish to make your views known about whether this land should be retained as Green Belt, please write to him at 2 Marsham Street, London, SW1P 4DF or email steve.reed.mp@parliament.uk.

Barnet Road to Baker Street Campaign Group



ELM COURT

YOUTH & COMMUNITY CENTRE

ELM COURT CAR BOOT SALES

Every Saturday until 3rd October (weather depending)
Cars £10, Vans £15, Early buyers £5 General public £1

Please check for updates via [facebook.com/ElmCourtEN6](https://www.facebook.com/ElmCourtEN6) or website

UPCOMING EVENTS

Sunday 19th July 2026- Camera Fair
Sunday 26th July 2026- Toy & Train Fair
Sunday 16th August 2026- Rotary Fun Day

VOLUNTARY ORGANISATIONS AND CHARITIES

Earn funds for your group by helping to organise the boot sales
All welcome please enquire

ROOMS FOR HIRE AT REASONABLE RATES

(rooms, large hall, kitchen, outdoor space)
admin@elmcourt.org.uk or tel 01707 659602

Mutton Lane, Potters Bar, EN6 3BP
Tel 01707 659602
www.elmcourt.org.uk
email: admin@elmcourt.org.uk
follow us on facebook

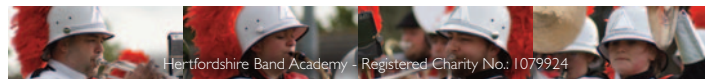
THANK YOU TO OUR STAFF, HELPERS AND COMMITTEE

Hertfordshire Showband **Donate Today** via Justgiving!

Every Note Counts. Every Donation Makes a Difference.
We provide an open and inclusive environment to build lifelong friendships, learn discipline, and experience the joy of music. Help us keep our tuition, uniform loans, and instrument rentals accessible to everyone in our community.

How you can help:

For sponsorship details, fundraising events and more ways you can support us, head to: www.hertfordshire-showband.org/support



Hertfordshire Band Academy - Registered Charity No.: 1079924

New SightLife Group for Potters Bar

Herts Vision Loss is delighted to announce that a brand new SightLife Group will soon be launching in Potters Bar, hosted at the wonderful Wyllyotts Theatre Café, EN6 2HZ.

This new support group aims to provide a friendly and supportive space for people living with sight loss and visual impairments, to connect with others, share experiences, and access helpful information and support. Whether you are looking for companionship, advice, or simply a place to enjoy good conversation over a cup of coffee, the SightLife Potters Bar Group will be a valuable addition to the local community. The group is planned to run on the first Thursday of each month from 11am–1pm. Details of the official launch event will be confirmed shortly.

If you would like to find out more about joining the group, or if you are interested in becoming a volunteer and offering support, please contact Kirsty by email at kirsty.shaw@hertsvisionloss.org.uk or call the office on 01707 324680. We look forward to hearing from you!

Health Talk

Wednesday 8th July, 7.15pm
at United Reform Church, Darkes Lane



Join us for our next Health Talk where we are please to welcome Tania Marques, Long-Term Conditions (LTC) Deputy Clinical Lead and Niamh Fairweather, Long-Term Conditions (LTC) Assistant Psychologist for this presentation



on how Talking Therapies can support those with long-term physical health conditions and their emotional well-being.

They say: “With this talk, we aim to raise awareness of the relationship between physical and emotional well-being. We recognise that living with LTCs can affect various aspects of our lives, including our quality of life, relationships, work, hobbies and finances. Additionally, feeling low, anxious, or stressed about living with an LTC can make it even harder to manage our health effectively. Accessing support through Hertfordshire and Mid-Essex Talking Therapies can help you manage your LTC, engage with what matters the most to you and live a full, meaningful life”.

martin shepherd

Solicitors LLP

WILLS and PROBATE

**Maple House, High Street,
Potters Bar, Hertfordshire EN6 5BS**
next to Tesco and free parking
E: dg@martinshepherd.co.uk
www.martinshepherd.co.uk

Martin Shepherd Solicitors LLP is a limited liability partnership registered in England and Wales, registration number OC356132. At Maple House, High Street, Potters Bar where a list of the members is kept.
Martin Shepherd Solicitors LLP is authorised and regulated by the Solicitors Regulation Authority numbers: 560729 (Potters Bar office); 562353 (Finchley office); 615079 (Hertford office).
VAT Registration Number 116 9785 78.

Your local Wills and Probate Solicitor

Martin Shepherd Solicitors LLP are regulated by the Solicitors Regulation Authority ensuring you receive a high quality, insured, professional service.

- ▶▶▶ Standard Single Will £325 + VAT
- ▶▶▶ Pair of Mirror Wills for a couple £425 + VAT
- ▶▶▶ Single Property and Financial Affairs/
Health and Welfare Lasting Powers of Attorney £500 + VAT
- ▶▶▶ Both a Property and Financial Affairs and
a Health and Welfare Lasting Power of Attorney £750 + VAT
- ▶▶▶ Pair of LPAs for a couple £1200 + VAT

When registering a Lasting Power of Attorney, a court fee is also payable

For an informal chat to discuss your requirements, please call **Debbie Gibbs** on

020 8367 3230

or email your enquiry to dg@martinshepherd.co.uk



What is a Social Prescriber?

The medical practices in Potters Bar have been pleased to recently welcome Pawel as a valuable member of their extended practice team. Spending time at Parkfield, Highview and Annandale practices each week, Pawel's role is as Social Prescriber.

A Social Prescriber actively supports patients by addressing a wide range of social, emotional, and practical needs. This may be by helping young patients overcome fear and build confidence to engage socially, enabling them to participate more fully in their communities. Supporting individuals in contacting social services to assess and implement any necessary home adaptations, improving their safety and independence at home.

He can provide compassionate support to patients experiencing grief following the loss of a loved one and can also refer individuals to appropriate services, including talking therapies.

A Social Prescriber supports carers who are looking after loved ones living with dementia, offering guidance, reassurance, and signposting to appropriate services to help them manage their caring responsibilities. He can also assist with applications for benefits such as Personal Independence Payment (PIP) and Blue Badges, as well as issuing food vouchers where needed. Through reassurance and guidance, a Social Prescriber can help patients gain confidence to move forward in their lives.

Ask at your practice for a referral to Pawel and he will be pleased to get in touch.

Health and Wellbeing Event

Friday 18th September 2026

The annual Potters Bar Health and Wellbeing event will be held at Wyllyotts Theatre, Darkes Lane on Friday 18th September from 10am–3pm.

There will be mini health checks, health talks from local GPs and health professionals, activity taster sessions and over 25 information stands offering advice and support to the community. All welcome – free entry.

Carers Coffee Mornings

The Parkfield Patients Group (PPG) recommenced the carers coffee mornings in September 2025, after being closed during Covid. The coffee morning is held once a month on every second Wednesday at St Mary's Church Hall at the top of The Walk with free refreshments and parking available.



It's an informal setting where carers can come together for a friendly chat and a cup of tea or coffee. We regularly get between 12 and 17 people and it's a small and intimate gathering giving all carers a safe space. The PPG works with other patient groups in the Potters Bar area and Carers in Herts. The coffee mornings are open to all; you do not need to be a Parkfield patient to attend. Come along to meet our friendly volunteers and chat with other carers and representatives from the surgery and Carers in Herts who can provide practical support and advice where needed.

We look forward to welcoming carers at our next coffee mornings on 8th July, 12th August, 9th September and every second Wednesday of the month.

cremation
or burial?
HELP!

PERSONALISED
FUNERAL PLANS

GRIEF

We offer
a private
personal
discrete
service

How?
When?
Where?
How much

Direct cremation
£1400 fully inclusive

Direct cremation
with funeral service
£2370 fully inclusive

Attended cremation
from £3800

F. UPSON
Independent Family
Funeral Directors
established 1870

members of
NAFD & SAIF

church
chapel
minister or
celebrant?

MEMORIALS

church
chapel
minister or
celebrant?

REPATRIATION

HEADSTONES

F. Upson Funeral Home & Chapel

Potters Bar 01707 642543 Enfield 020 8366 0999

(available 24 hours) info@f-upson.co.uk



New Library at Oakmere School

Pupils at Oakmere Primary School are settling into their brand new library, the result of a determined fundraising campaign by the school's PTA, who managed to raise an impressive £10,000 to bring the project to life.

Families and pupils gathered for a cheerful launch event to see the space for the first time. Children's author Andrew Weale joined the celebrations, chatting with pupils and signing copies of his book. The library itself has been designed with children firmly in mind. Bright colours, cosy corners, and shelves packed with fiction and non-fiction text. The new library will become a hub for children to come and relax and develop a love of reading.

News from Mayfair Lodge

We had a great Easter party at Mayfair Lodge with a Punch & Judy show, which the residents really enjoyed, even joining in with the show. So much fun was had in our Tea Room on the day. Our Tea Room is open for residents every Wednesday 2-4pm for singing, dancing and entertainment.

Our ever-popular quiz was held in June and, as usual, this was sold out. Many thanks to all those who attended and to our near neighbours, Potters Bar Cricket Club, who generously allowed us use of their Club House.

The Friends have recently acquired their own container from a local company who gave them excellent service in relation to its purchase. This will greatly assist in the running of future events.





FOR A FRIENDLY LOCAL DENTIST YOU CAN TRUST

Dr M.A. Watts & Associates

Now in our new state of the art surgery at
32 Baker Street
Potters Bar
Herts EN6 2EB

Telephone:
01707 653 589

SELBOURNE DENTAL CARE is well established and highly recommended throughout the area. We provide high quality treatment at affordable prices.

Our dental team has a special interest in treating nervous patients – Sedation available.
Hygienist available from £43 per session.
Same day emergency service.

COSMETIC DENTISTRY

Complete smile make-overs and six month smile orthodontics.
Safe Tooth whitening.
Lumineers, metal free crowns, tooth coloured restorations.
Dental Implants to replace missing teeth.
New flexible dentures for improved comfort.
Complimentary treatments – wrinkle reduction therapy. – facial rejuvenation.



New Specialist School

Residents familiar with the former Sunny Bank Primary School site may have noticed exciting progress, as construction is now well underway on a new specialist school. Journeys Academy is being developed for children with complex communication and autism needs, providing a purpose-built environment designed to help every pupil thrive.

Scheduled to open in October 2026, the academy will offer 60 places for primary-aged children. Delivered in partnership with The Agora Learning Partnership and constructed by Ashe Construction, Journeys Academy will provide a high-quality learning environment tailored to meet individual needs.

The school building will feature 10 modern classrooms alongside a range of specialist facilities. These include spaces for practical activities, a dedicated sensory room, a soft play area, and a large open-plan library and ICT suite. The layout has been thoughtfully designed to promote independence and collaboration, with learning spaces flowing seamlessly into outdoor areas. Editor: See pictures in our Gallery on our website.

Outside, pupils will have access to a grass playing field and a multi-use games area, encouraging physical activity and outdoor learning. Importantly, these outdoor facilities will also be available for community use, strengthening links between the school and residents.

At Journeys Academy, the ethos is simple but powerful: education is a journey! The school aims to create a supportive and inclusive environment where pupils, families, staff, and the wider community work together, learning from one another every step of the way. By fostering strong relationships and providing tailored support, Journeys Academy will help children build confidence, develop essential skills, and reach their full potential.

We are keen to make strong community links with residents and businesses. We are currently developing our governing board and staff team as well as resourcing the school. If you would like to explore the different ways you could be involved, then please email us on admin@journeys.agoralp.co.uk.

Sheryl Wall, Headteacher
Helen Parkin, Deputy Headteacher

Environmental Improvement Grant Update

Country Management Services is helping to deliver the County Council's 'Sustainable Hertfordshire' through its grant scheme (EIG). This supports a broad range of projects to enhance nature across the county and has just had its most successful year with over £40,000 in grants awarded to projects with a total value of £125,000.

In the last year projects supported by these grants planted 17,000 trees, created and restored ponds, planted wildflower seeds and contributed to the restoration of areas of grassland. To explore whether we could support your nature enhancement project, visit Countryside management grants, advice and services | Hertfordshire County Council or contact cms@hertfordshire.gov.uk

Hertfordshire rights-of-way Google map reaches five million views

The Google map of public rights-of-way in Hertfordshire published by the council has now been viewed more than five million times. The map can be easily loaded onto your smartphone, making it simple to follow your position on a map as you go. This is the perfect way to help you find and follow the routes close to your home, and to explore over 3000km of rights-of-way across the county. They are a valuable asset, providing endless opportunities for people to get out and active in the countryside. As well as improving health and wellbeing, this can support the goals of the Council's Local Transport Plan, which prioritises active travel. To find the Google map and try it out, visit www.hertfordshire.gov.uk/rowmap.

A Heartfelt Thank You

My father is 90 years old. Although age has slowed his step, he still enjoys getting out and about with his walking frame and making good use of his free bus pass. These bus journeys are more than just trips from one place to another. They give him independence, variety, and the pleasure of remaining connected to the wider world.

As anyone who has supported an elderly relative will know, getting on and off a bus can sometimes be challenging. Yet time and again, complete strangers have stepped forward to help. A steadying hand, a patient word, a willingness to wait a moment longer – small acts of kindness that make a tremendous difference.

The people who offer this help do not know my father, and they receive nothing in return. They simply see someone who could use a little assistance and choose to help. Their kindness keeps him safer, gives our family reassurance, and allows him to continue enjoying the freedom that means so much to him.

I would also like to offer special thanks to the bus drivers who serve our community. They show my father patience and understanding, as well as friendliness and respect. Their thoughtful approach helps make every journey a little easier.

So, this is a heartfelt thank you to all those people in Potters Bar who have helped my father along his way. Whether you offered a hand, a smile, a few moments of patience, or simply looked out for him, please know that your kindness has been noticed and deeply appreciated.

You may think it was only a small thing. To us, it was a very big thing indeed.

Phil Hadley

Northaw Community Orchard



The Community Orchard is a public green space in the heart of Northaw for all to enjoy. We aim to provide opportunities for education, conservation and healthy living. Run and managed entirely

by volunteers, the Orchard is open all day, every day, for the benefit of our community and has wildflower meadows, 80 fruit and nut trees and a lovely picnic area (no dogs please).

This year has been challenging with too much water at the start and too little afterwards, but the Orchard has still thrived and is a wonderful haven for wildlife and people alike!

Join our help-out sessions for gentle exercise in the fresh air! First Saturday in the month 10.30am to 1pm, and a middle Thursday in the month 2–4.30pm (check website for dates). Volunteers always welcome – tools, tea, coffee and cake provided! Find the Orchard between No. 47 and 49 Northaw Road West (access road to the Scouts) or use entrance in Church Lane (by the bungalows). Some parking available.

For more information about our events and visit our website www.northaworchard.com or email northaworchard@gmail.com.

POTTERS BAR LEARNING CENTRE

- Individually tailored programmes for children ages 5 – 16 (Key Stage 1 to GCSE)
- Aligned to the National Curriculum
- Weekly tuition with daily bite-size homework

OPENING TIMES

Thursday 3:30pm – 5:00pm

Saturday 10:00am – 12:00pm

TO BOOK A **FREE** ASSESSMENT CALL

07708 655 554

firstclasslearning.co.uk/potters-bar



C R H

Property Maintenance

Over 30 years experience

Specialist in wall, floor tiling, laminate.

Carpentry, painting and decorating.

Excellent references No job too small

Special rates for the retired

0784 3386527 / 01707 663950

Kitchen celebrations at Elm Court

Can you get excited about a new kitchen? At Elm Court we definitely are. Kitchen talk has been on the agenda for quite a while, and now it is happening. You will be able to hire up-to-date catering facilities for functions and parties, and young people will be able to get used to cooking before they move out into the world. We have included two 'training stations', each with a hob, oven, sink, and microwave and there is still room for our usual everyday use. All are welcome to come and view.

The nursery at Elm Court welcomes children all year and will be operating over the summer. Their garden is in a corner of the Elm Court field with plenty of room for play. Also, out at the far end of the field will be Forest School and football training in the middle. The field also hosts the Carnival in June and Rotary Fun Day in August and, with our Saturday Car Boot Sales, it hosts lots of activities. It is a real asset for Potters Bar.

However, Elm Court does not run itself and nor does the Council. We are almost entirely self-funding (car boots and hires) and run by a wonderful group of volunteers to aid our three lovely part-time staff. Can you come and help – either practically or by joining the Management Committee? That way your Community Centre will continue to thrive, and you will feel the benefit of giving back to the community. Give it a go.

High End Couture in Potters Bar

It was a real pleasure to be invited into a small 'pleating' factory at the back of Sainsbury's in Potters Bar. I had no idea what to expect, particularly as my last experience of 'pleating' was on my school skirt in the 60s! I walked into a small factory not much bigger than my own living room. It was filled with rolls of cardboard. I was greeted by a couple of friendly staff and the proprietor, Matthew Weinert.

Matthew told me that the business, started by Fernec Ciment, is over 100 years old. It had been in Matthews Family for three generations, moving from the West End to Walthamstow and finally to Potters Bar in 2005.

I looked around, absolutely fascinated, whilst Matthew explained that pleating was 'forming shapes in fabric through heat and pressure'. He spoke of origami models and 'tessellation' which I had to look up! Google said it is 'A repeating pattern of geometric shapes that fit together perfectly across a flat surface with no gaps and no overlaps'.

In this small room they make costumes after film makers, dress designers, fashion houses, and milliners send them the fabric which is then stretched over a very precisely folded piece of cardboard. The cardboard is accurately marked into a pattern and then heated and run through machines that are themselves 100 years old.

Have a look at the finished work on their website (www.cimentpleating.com) including Lady Gaga, Torville and Dean and in films like *Harry Potter* and *Game of Thrones*. The late queen herself used this factory for over 70 years. Mathew now lectures at the College of Fashion and is starting Pleating Workshops to pass on his family's expertise to students at home and abroad.

Thank you Matthew and team for that wonderful insight into some of the strange things that go on in Potters Bar!

Vivien Arey

NETHERCOTT
INDEPENDENT FAMILY FUNERAL DIRECTORS

Proudly Serving the People of Potters Bar for 110 years.

We Provide a Complete Service:

- Bespoke Funeral Arrangements
- 24 Hour Emergency Cover
- Private Chapels of Rest
- A Range of Memorials
- Pre-Paid Funerals Plans
- Bereavement Counselling through SAIFCare

Potters Bar Office – 150 Darkes Lane
Telephone: 01707 652288

Website: www.nethercott-funerals.co.uk Email: office@nethercott-funerals.co.uk

BONJOUR **Multi Lingos** **Ciao**
HOLA! Language Tutoring for all
ΓΕΛΑ ΣΟΥ **Want to learn or improve on a language?** **Hello**

French, Spanish, Italian, Greek or English from a Modern Languages graduate
Potters Bar based or online
For more info: 07943 565 519

Fun at the Carnival

The committee members were pleased to welcome the community back after a one-year break, and what a comeback it was. A full procession, arena and showground were enjoyed by thousands. We were pleased to welcome the Mayor of Hertsmere, Councillor Parveen Rani who delivered a wonderful speech about the hard work of the community and how special Potters Bar is.

The Mayor was treated to very special horse-and-carriage ride in the procession, courtesy of Nethercott funeral directors. We would like to thank them for their kindness and support on Carnival Day. Huge appreciation also goes to PB Scaffolding for their donation of the arena stage, Elm Court for a fantastic community venue, Lanterns for the use of lorries and drivers for the parade, and to Duncan Perry for their marketing support. To be supported by local businesses means so much – thank you.

Our final thank you goes to every carnival goer, every supporter and stall holder. This is a day for the whole town which raises thousands of pounds from community efforts. Our town is a fantastic place to live, and the carnival is the highlight for so many of us.

The Carnival Committee



RO Group quiz night raises £13,000

Family-owned trading business, the RO Group, based in Potters Bar, has once again brought together its community of colleagues, friends and partners for its annual charity quiz night – this year raising £13,000 for the Herts Disability Sports Foundation (HDSF), a charity that promotes and provides sporting activities for people with disabilities across Hertfordshire.

The event, held at the Wyllyotts Theatre in Potters Bar, marked the 22nd year of the RO's much-loved quiz tradition, with the evening continuing the Group's long-standing commitment to supporting local charities. To date, the annual event has raised close to £120,000 for community organisations across the region.

At the heart of HDSF's work is the belief that sport should be open to everyone. By creating welcoming, supportive, and non-judgemental spaces, it enables everyone taking part in its activities to build confidence, develop friendships and feel part of a community, while improving their physical and mental wellbeing. By working with schools, community groups and care providers, the charity creates opportunities for people to get involved in ways that are accessible, inclusive, and genuinely enjoyable.

The Foundation delivers a wide range of accessible sporting opportunities, including archery, boccia, wheelchair basketball,

paddleboarding, adaptive cycling, fitness and mobility sessions, and dance.

Alongside its community programmes, HDSF also provides training and development opportunities for coaches and support staff, providing a holistic approach to inclusive sports development.

This year's quiz night also coincides with the No Limits 2026 campaign, a county-wide initiative focused on breaking down barriers and driving lasting change in how disabled people access and experience sport and physical activity in Hertfordshire. Through collaboration with local partners, the campaign aims to create more inclusive environments, challenge perceptions, and ensure that opportunities in sport are open to all, regardless of ability.

Editor: A fuller version of this article appears on our website.

Stay Amazing at Home with Visiting Angels this Summer!

Quality, personalised home care designed to meet your loved one's unique needs.

Visiting Angels can help with:

- Staying active
- Attending Social Activities
- Having a companion
- Light Housekeeping
- Shopping & errands
- Planning & preparing meals
- Diet Monitoring
- Helping with personal Care

Contact us today for a free assessment.



Visiting Angels South Hertfordshire
Call 01707 585888
southherts@visiting-angels.co.uk

WHAT'S ON

JULY

WEDNESDAY 1st

- *Wednesday Community Club Len Little – ‘My life as a police dog handler’.

THURSDAY 2nd

- ABBA Voyage Coach Trip. 07354 903222. £120.

FRIDAY 3rd

- Plus Size Ladies Sale at Mayfair Lodge, Watkins Rise, The Walk, Potters Bar. 7–9pm. All new labelled clothes at very reasonable prices. Come along and grab a bargain and support our charity. Tel 07833 306093.

SATURDAY 4th

- *Potters Bar Cricket 1st X1 v Radlett. Home. 11am.
- Le Touquet France Coach Trip. 07354 903222.
- *Potters Bar Community Music School Junior Chamber Concert. 1pm. Gracewood Academy. A chance for our youngest students to shine. Free entry.

SUNDAY 5th

- North Mymms Horticultural Society Summer Show North Mymms Youth and Community Centre, Station Road, AL9 7PF. 2pm.
- Fellowship BBQ 12 noon–3pm. St Mary’s Church, North Mymms, AL9 7TN.

TUESDAY 7th

- Lunchtime Recital Joanna Lam (piano). 12.30pm. Retiring collection. Light lunches (£6) available from 12 noon. St Mary’s Church, The Walk.
- Strictly Come Hospice 2027 Rennie Grove Peace Hospice invites applications for ‘Strictly Come Hospice 2027’. For anyone over 18. A chance to learn from professional dancers and raise money to support hospice care. Taster day on 7th July. Training starts in November 2026. Grand Final January 2027. Contact renniegrovepeace.org/strictly2027.
- Ramsgate, Broadstairs and Margate Coach Trip. 07354 903222. £40.

WEDNESDAY 8th

- *Wednesday Community Club Games and chat.
- Health Talk ‘Talking Therapies’. United Reformed Church, Darkes Lane. 7.15pm

THURSDAY 9th

- *North London and Middlesex Morris Minor Club Club Night at Whitewebbs Motor Museum, Enfield. 7.30–9pm.
- RHS Flower Show – Badminton House in Gloucestershire Coach Trip. 07354 903222. £70.
- *PB Filmmakers Live shoot for next meeting.

FRIDAY 10th

- *Potters Bar Community Music School Senior Chamber Concert. 7pm. Our Lady and St Vincent’s Church. Chamber music from our more advanced students, including Vivaldi.

SATURDAY 11th

- *Potters Bar Community Music School Full Orchestra Concert. 7pm. Gracewood Academy Hall. Featuring 3 winds bands, 3 string orchestras, two full orchestras and our choir. Tickets at the door by card or cash. £7 for the waged and concessions free.
- *Potters Bar Cricket 1st X1 v Broxbourne. Home. 11am.
- *Barnet Walks ‘Footsteps of the Famous in High Barnet’. 2.30pm. Meet at High Barnet tube station.

SUNDAY 12th

- Cotswolds Summer Village Tour Coach Trip. 07354 903222. £42.
- Teddy Bears Picnic 2–4pm. St Mary’s Church, North Mymms, AL9 7TN.
- ‘Hymns and Pimm’s’ Come along and sing some favourite hymns followed by a glass or two of Pimm’s. 4pm. All welcome. St Mary’s Church, The Walk. Details 07803 756088.
- *Potters Bar Society Walk.

MONDAY 13th

- *Potters Bar u3a Speaker Tom Way – ‘Exciting Wildlife Around the World’.

TUESDAY 14th

- *Cuffley Floral Art Club Demonstrator Graham Harmer – ‘All on a Summer’s Day’. 7 for 7.30pm. Cuffley Hall.

WEDNESDAY 15th

- *Wednesday Community Club Games and chat.

SATURDAY 18th

- *Potters Bar Cricket 1st X1 v Totteridge. Away. 11am

MONDAY 20th

- *PB & District Historical Society ‘Hatton Garden’, Chris Foster (ex-police officer and Camden Town Tour Guide)

WEDNESDAY 22nd

- *Wednesday Community Club Outing to Southend-on-Sea. 10.30am.

THURSDAY 23rd

- *PB Filmmakers Rushes and editing of live filming from 9th July.
- *‘12 Incompetent Jurors’ The Cuffley Players. See page 21.

FRIDAY 24th

- *‘12 Incompetent Jurors’ The Cuffley Players. See page 21.

SATURDAY 25th

- *‘12 Incompetent Jurors’ The Cuffley Players. See page 21.
- *Wednesday Community Club ‘Just Dave’, musician.
- *Potters Bar Cricket 1st X1 v Flitwick. Home. 11am.

SUNDAY 26th

- *Potters Bar Society Walk.
- *Northaw Community Orchard Fayre 1–5pm. Entrance free. Community groups, activities for all, plants, BBQ and refreshments.

AUGUST

SATURDAY 1st

- *Potters Bar Cricket 1st X1 v West Herts. Away. 11am.

TUESDAY 4th

- Lunchtime Recital Aleksandra Lipke (piano). 12.30pm. Retiring collection. Light lunches (£7) available from 12 noon. St Mary’s Church, The Walk.

SATURDAY 8th

- *Potters Bar Cricket 1st X1 v Bishops Stortford. Home. 11am.

SUNDAY 9th

- *Potters Bar Society Walk

SATURDAY 15th

- *Potters Bar Cricket 1st X1 v Hertford. Home. 11am

SATURDAY 22nd

- *Potters Bar Cricket 1st X1 v Old Owens. Away. 11am.

SUNDAY 23rd

- *Potters Bar Society Walk.

THURSDAY 27th

- Savill Gardens and Cream Tea Cruise Coach Trip. 07354 903222. £80.

SATURDAY 29th

- Faversham and Whitstable Coach Trip. 07354 903222. Live music, dancing and hops in Faversham, then boat trips and seafood in Whitstable. £42.
- *Potters Bar Cricket 1st X1 v Harpenden. Home. 11am.

SEPTEMBER

TUESDAY 1st

- *‘The Vicar of Dibley Christmas: The Second Coming’ PB Theatre Company. See page 23.
- Lunchtime Recital Rarescale (flute ensemble). 12.30pm. Retiring collection. Light lunches (£7) available from 12 noon. St Mary’s Church, The Walk.

WEDNESDAY 2nd

- Lunch at Highgrove or Cirencester Coach Trip. 07354 903222. £149 or £40.
- *‘The Vicar of Dibley Christmas: The Second Coming’ see page 23.

THURSDAY 3rd

- *PB Filmmakers Competition Film to a record or poem.
- *‘The Vicar of Dibley Christmas: The Second Coming’ see page 23.

FRIDAY 4th

- *‘The Vicar of Dibley Christmas: The Second Coming’ see page 23.

SATURDAY 5th

- *‘The Vicar of Dibley Christmas: The Second Coming’ see page 23.
- *Potters Bar Cricket 1st X1 v Radlett. Away. 11am.

SUNDAY 6th

- *North Mymms Horticultural Society Autumn Show North Mymms Youth and Community Centre, Station Road, AL9 7PF. 2pm.
- *North London and Middlesex Morris Minor Owners Club Morris Minor Owners Club Rally and Car Show at Capel Manor Gardens, 9am–5pm.
- *Potters Bar Society Walk.

TUESDAY 8th

- *Cuffley Floral Art Club Annette Urquhart (National Demonstrator) – ‘Oranges and Lemons’. 7 for 7.30pm. Cuffley Hall.
- *‘Come From Away’ Green Room Productions. 7.30pm Wylyotts Theatre. Tickets from www.wylyottstheatre.co.uk or box office 01707 645005.

WEDNESDAY 9th

- *‘Come From Away’ see above.
- *Enfield National Trust Association ‘The Flora and Fauna of Bolivia’, Matt Andrews. 7 for 7.15pm. Contact Graham for further information 01707 321759.
- *Wednesday Community Club Games and chat.

THURSDAY 10th

- Buckingham Palace Tour or Lunch or Afternoon Tea at The Goring Hotel Coach Trip. 07354 903222. £80.
- *‘Come From Away’ see above.

FRIDAY 11th

- Quiz 7 for 7.30pm start at Potters Bar Cricket Club. Tables maximum 8 people. £10 per person, bar open, bring your own nibbles. Come along for a fun filled evening. All monies raised go to Mayfair Lodge Care Home. Book early as sold out last time. Tel 07833 306093.
- *‘Come From Away’ see above.

SATURDAY 12th

- Jumble Sale 12 noon–3pm at Mayfair Lodge, Watkins Rise, The Walk, Potters Bar. Please come along and support our charity. 07833 306093.

WHAT'S ON

➤ **'Come From Away'** see above. Matinee 2.30pm. Tickets £20–£24 (Children £16–£20).

TUESDAY 15th

➤ **Sudeley Castle and Cotswold Tour** Coach Trip. 07354 903222. £70.

WEDNESDAY 16th

➤ ***Wednesday Community Club** 'Just Dave' Musician.

THURSDAY 17th

➤ ***PB Filmmakers** 'Model' filming by Kim Harrold. (Scaletrix).
 ➤ **The Repair Shop or Chichester** Coach Trip. Choose either the Weald and Downland. Museum in East Sussex or the day in Chichester. £70 or £40. 07354 903222.

FRIDAY 18th

➤ ***RSPB Potters Bar and Barnet Local Group** 'Living the African Dream' with Alison Mees, 16 years in the safari industry and supporting community and cheetah observation projects.

SUNDAY 20th

➤ ***Potters Bar Society** Walk.

WEDNESDAY 23rd

➤ ***Wednesday Community Club** Nick Dobson – 'Swinging London in the 1960s'.
 ➤ **Horse Drawn Canal Boat Trip and Cream Tea** in Reading. Coach trip. 07354 903222. £70.

SUNDAY 27th

➤ ***North London and Middlesex Morris Minor Owners** Morris and Spares Day at the Whitewebbs Motor Museum, 9am–4pm.

WEDNESDAY 30th

➤ ***Wednesday Community Club** Games and chat.

OCTOBER

THURSDAY 1st

➤ ***PB Filmmakers** Pot luck.

SATURDAY 3rd

➤ **Jumble Sale** 4th Potters Bar Scouts at St John's Methodist Church, Baker Street, Potters Bar, EN6 2DZ. Entry (from Heather Way) £2 at 10am or 50p at 10.30am. Finishes at noon.

SUNDAY 4th

➤ ***PB Filmmakers Film Festival** 2.30pm, Wyllyotts Centre.
 ➤ **PB Baptist Church Harvest Service** 10.30am followed by lunch at 12.45pm. 01707 840538.
 ➤ **Harvest Festival Family Communion Service** at 10am, followed by lunch at 12 noon. All welcome. St Mary's Church, The Walk. 07803 756088.

TUESDAY 6th

➤ **Lunchtime Recital** Bushey Winds. 12.30pm. Retiring collection. Light lunches (£7) available from 12 noon. St Mary's Church, The Walk.

WEDNESDAY 7th

➤ ***Wednesday Community Club** Jean Hewitt – 'Macular Degeneration'.

THURSDAY 8th

➤ ***Enfield National Trust Association** 'The History of Bandstands', Paul Rabbits. 7 for 7.15pm. Contact Pam for information 01707 650969.
 ➤ ***North London and Middlesex Morris Minor Owners Club Night** at the Whitewebbs Museum. 7.30–9pm.

SUNDAY 11th

➤ ***Art in Herts Annual exhibition** 'Hearts in Art', Elm Court. See page 22.

TUESDAY 13th

➤ ***Cuffley Floral Art Club** Demonstrator Helen Temple – 'Which Witch is Which', 7 for 7.30pm. Cuffley Hall.

WEDNESDAY 14th

➤ ***RSPB Potters Bar and Barnet Local Group** 'Naturally Native', Annie Luder. Gardening with British 'natives' at home.
 ➤ ***Wednesday Community Club** Games and chat.

THURSDAY 15th

➤ ***PB Filmmakers** Guest speaker TBA.

FRIDAY 16th

➤ ***RSPB Potters Bar and Barnet Local Group** AGM followed by 'Wild Herzegovina' with Denis Bohm. Wildlife in this area of southern Europe with its diverse habitats and beautiful scenery.
 ➤ **Potters Bar Baptist Church Quiz Night**, 7.30pm. Email susanbreatley@hotmail.co.uk.

WEDNESDAY 21st

➤ ***Enfield National Trust Association** 'Women in Intelligence', Helen Fry. 1.45 for 2pm. Contact Pam for information 01707 650969.
 ➤ ***Wednesday Community Club** Games and chat.

WEDNESDAY 28th

➤ ***Wednesday Community Club** 'Chance for childhood' Anniversary lunch.

THURSDAY 29th

➤ ***PB Filmmakers** 'A creepy evening'.
 ➤ ***Barnet Walks Halloween** in High Barnet Walk. 7.30pm. Meet at High Barnet tube station.

FRIDAY 30th

➤ ***Barnet Walks Halloween** in High Barnet Walk. See above.

SATURDAY 31st

➤ ***Barnet Walks Halloween** in High Barnet Walk. See above.

NOVEMBER

SUNDAY 1st

➤ ***Barnet Walks Halloween** in High Barnet Walk. See above.
 ➤ **All Souls Service** St Mary's Church, North Myms, AL9 7TN. 4pm (to remember those recently departed).
 ➤ **Remembering Our Loved Ones** A service to remember and give thanks for departed relatives and friends. All welcome. 3pm, St Mary's Church, The Walk. Followed by tea and cakes. 07803 756088.

TUESDAY 3rd

➤ **Lunchtime Recital** Quintessimo (wind quintet). 12.30pm. Retiring collection. Light lunches (£7) available from 12 noon. St Mary's Church, The Walk.
 ➤ **'Grease'** **Green Room Productions** 7.30pm. Saturday matinee 2.30pm. Tickets £20–£24 (Children £16–£20) Wyllyotts Theatre. Tickets www.wyllyottstheatre.co.uk or box office 01707 645005.

WEDNESDAY 4th

➤ ***Wednesday Community Club** Games and chat
 ➤ **'Grease'** see above.

THURSDAY 5th

➤ **'Grease'** see above.

FRIDAY 6th

➤ **'Grease'** see above.

SATURDAY 7th

➤ **'Grease'** matinee at 2.30pm. See above.
 ➤ **Christmas Market** 4th Potters Bar Scout Group at St John's Methodist Church, Baker Street, Potters Bar, EN6 2DZ. 10.30am–1pm. Various stalls, games, tombola, raffle and other attractions. Refreshments, including hot food. Early visit from Father Christmas!

SUNDAY 8th

➤ **Potters Bar Baptist Church** November Remembrance Service. 10.30am.
 ➤ **Remembrance Day Service** at the War Memorial from 10.50am, following church service at St Mary's at 9.30am.

TUESDAY 10th

➤ **Thursford Christmas Spectacular** with Christmas Dinner in Norfolk Coach Trip. 07354 903222. Top price seats for Europe's largest Christmas show with Christmas dinner at the 'George' in Swaffham. £125.
 ➤ **'The Great British Bake-Off Musical'** Potters Bar Theatre Company. See page 23.
 ➤ ***Cuffley Floral Art Club** Demonstrator Social Evening. 7 for 7.30pm. Cuffley Hall.

WEDNESDAY 11th

➤ **'The Great British Bake-Off Musical'**, see page 23.
 ➤ ***RSPB Potters Bar and Barnet Local Group** 'The Wild Life of London' with Jon Mason (AKA The Early Birder). Observations and photographs from wildlife areas around the capital city.
 ➤ ***Wednesday Community Club** Harringey Shed Singers.

THURSDAY 12th

➤ **'The Great British Bake-Off Musical'**, see page 23.
 ➤ ***Enfield National Trust Association** 'Sovereign Hill' by Joy Hall. 1.45 for 2pm. Contact Pam for information 01707 650969.
 ➤ ***North London and Middlesex Morris Minor Owners Club** Club Night at the Whitewebbs Museum from 7.30–9pm.
 ➤ ***PB Filmmakers** Competition. Documentary.

FRIDAY 13th

➤ **'The Great British Bake-Off Musical'**, see page 23.

SATURDAY 14th

➤ ***Hertfordshire Philharmonia Concert** 7.30pm. St Mary's Church, The Walk. 'In Remembrance'. Music by Butterworth, Ravel and Vaughan Williams. Information www.hertsphil.org.uk.
 ➤ **'The Great British Bake-Off Musical'**, see page 23.

MONDAY 16th

➤ **Thursford Christmas Spectacular** with Christmas Dinner in Norfolk Coach Trip. 07354 903222. Top price seats for Europe's largest Christmas show with Christmas dinner at the 'George' in Swaffham. £125.

WEDNESDAY 18th

➤ ***Wednesday Community Club** Games and chat.

THURSDAY 19th

➤ **'The Boyfriend'** by The Warren at Alexander Wilding Suite, Wyllyotts Theatre. 01707 645005.

FRIDAY 20th

➤ **'The Boyfriend'**, see above.
 ➤ ***RSPB Potters Bar and Barnet Local Group** 'Conservation work at RSPB Otmoor' by David Willis, a warden at the reserve.

SATURDAY 21st

➤ **'The Boyfriend'**, see above.

Please check details of these events by telephoning the contact provided. An asterisk * means more details about venues and times included in Clubs and Organisations section.

To include an event contact susan.weaver4@ntlworld.com.



GREEN ROOM presents
the global award-winning musical

COME FROM AWAY

Book, Music and Lyrics by
IRENE SANKOFF and DAVID HEIN

Tuesday 8th to Saturday 12th September 2026

WYLLYOTTS THEATRE
POTTERS BAR, EN6 2HZ

This amateur production is presented by arrangement with Music Theatre International (MTI)
All authorised performance materials are also supplied by MTI www.mtishows.co.uk

www.wyllyottstheatre.co.uk 01707 645005

Successful season for Hockey Club

After completing the first full season at their new home pitch at Queenswood School, Potters Bar Hockey Club rounded things off with a fun club day of mixed team tournaments. Both the younger and the older players combined to form mixed teams and then battle it out for the title of Team of the Day. On a wonderful sunny day, the spectators were treated to some close games and some well-taken goals. It was a very enjoyable way to end the season.

The league season had ended a week earlier, with all four of the club's teams finishing the campaign in respectable mid-table positions in their respective divisions in the East of England leagues. After the summer break, the club will be resuming its weekly coaching sessions at the beginning of September.

Potters Bar Town Football Club looking to bounce back

Everyone would have to agree that this has been a tough season for the Scholars. After spending a year playing home matches at Kings Langley, they returned to the Lantern Stadium with its new 3G pitch. Unfortunately, the team took too long to adapt and by November they were 12 points adrift at the bottom of the League. Despite some good results, this proved insurmountable, and after playing in the Tier 7 Isthmian Premier League since gaining promotion in 2018, they have been relegated to Tier 8.

Next season they will be playing in the Southern League Division One Central. Here there is a more classic non-league style of play, more physical with a long ball game. It is less technical than the Isthmian League, with its emphasis on shorter passes and tighter control. This should suit the team's strengths, and there is real optimism for the future.

Also, there are many other Hertfordshire teams in the division, such as Ware, Hertford, and Leverstock Green. This is a welcome contrast to last season, when the last game, for example, was played at Whitehawk near Brighton. The Scholars will be looking to build a regular support base, at both home and away matches.

Next season will see a new manager: Jimmy Martin, who was previously at Biggleswade Town. They also will be playing in our division next season. The aim will be to rebuild for the future and create stability, rather than aiming for a quick fix. The team have been punching above their weight for the last eight seasons, but do not need to do so next year.

The club has the infrastructure, and now needs to deliver results on the pitch. There is genuine optimism that, come the new campaign, they will do so.

UNION SCRAP METALS LTD

**WE WOULD LIKE TO BUY YOUR
Unwanted Cable • Lead • Brass
Copper • Non-Ferrous Metals**

**ANY QUANTITY
WHEN WE COLLECT WE WEIGH & PAY!**



To comply with licence regulations:

**Proof of ID required
NO cash payments
Direct, same day
bank payments**

With our Environmental Licence we now offer a compliant domestic/commercial **WASTE RUBBISH CLEARANCE SERVICE** operating seven days a week

SPECIAL PRICES FOR POTTERS BAR OAP's

FOR FRIENDLY, HELPFUL ADVICE & SERVICE PLEASE CALL DENIS ON 07908 754288
e: denis@unionscrapmetals.co.uk

OPEN 7 DAYS A WEEK

49 SERVICE ROAD, POTTERS BAR, HERTS EN6 1QA

Environmental Waste Licence No: CBDU 180043

Scrap Metal Licence No: SL/011/17

VAT Reg No: 269989216



High hopes for Cricket Club

Having finished a disappointing third place in 2025, Potters Bar will look to improve and get back to being a title contender this summer. For the first time since 2008, Bar have an overseas professional having secured Thorn Parkes from New Zealand. Two promising young players, Henry Hawkins and Kashyap Shab, have also joined from recently relegated Welwyn Garden City.

The rest of the club's teams had good summers. The 2nd eleven managed to finish halfway in Division 2a after a promotion the previous summer, and the 3rd and 4th elevens both were promoted. The 3rd won their division, and the 4th gained promotion from a strong finish. This year both are competing in divisions higher than they have been for several years. A promising start to the season included wins for the 1st and 4th teams, and narrow defeats for the 2nd and 3rd elevens. However, there is a cost to running one of the best cricket clubs in the South East, especially with youth coaching becoming increasingly important. It is vital for the club to try to attract sponsors. There are packages for all budgets, whether being the main principal club sponsor, a matchday sponsor, or supporting other aspects of keeping the club moving forwards.

There is a superb opportunity for a company to have their name put to one of the best clubs in not just the county, but the entire South East Region, with a flourishing youth system that has some of the best coaches available. The ground is also one of the best in the area and everyone is welcome to come and enjoy what we have to offer.

To keep up to date please visit our website at www.pitchero.com/clubs/pottersbarcc.

NAVILLUS ELECTRICAL
 Christopher Sullivan - Electrician
 NICEIC Domestic Installer. All types of domestic electrical works undertaken.
 07745717257
 @NavillusElectrical
 DOMESTIC INSTALLER

Try bowls at North Mymms Bowls Club

Ever thought of trying lawn bowls? Our bowls club is in Welham Green and we welcome anyone to come and see what the game is all about, maybe have a drink and chat with some of our members. We always welcome new members to keep the tradition of bowling going.

The green opened at the end of April, and we began the season with fine weather and a fun spoon drive for members and social members. Early in May we had a lovely coach trip to Clacton Bowls Club, who gave us a great welcome. A friendly match was played in the afternoon followed by a cream tea before we made our way home.

We held two open days in May with contrasting weather. The first was extremely cold and attracted few visitors, while the next one was during a heatwave! Although it was very hot we attracted several would-be bowlers and gained some new members.

If you are newly retired, why not come and try lawn bowling? No problem if you are working, as most matches take place at weekends and there are evening leagues to play in. It's not too late in the season to begin, and all you need to start is some flat-soled shoes. We have bowling equipment for beginners to try and qualified coaches to show you how. As a special offer to attract new bowlers, the club is offering the first year's membership at a greatly reduced rate.

Website northmymmsbowlsclub.org or contact Membership Secretary Ros Bolt on 01707 696786 or rbolt@gmail.com.

GREEN ROOM presents **IT'S ELECTRIFYIN'!**

WE GO TOGETHER GREASE
 19 THE MUSICAL 59

BOOK, MUSIC AND LYRICS BY JIM JACOBS AND WARREN CASEY

"Hopelessly Devoted to You," "You're The One That I Want," "Sandy" and "Grease" are used by arrangement with Robert Stigwood

Tuesday 3 to Saturday 7 November 2026
 at 7.30pm Saturday Matinee at 2.30pm
 BSL Interpreted Performance at the Saturday Matinee

WYLLYOTTS THEATRE
 POTTERS BAR, EN6 2HZ

THE ONE THAT YOU WANT!

"GREASE" is presented through special arrangement with and all authorised performance materials are supplied by Theatrical Rights Worldwide Ltd (TRW). www.theatricalrights.co.uk

www.wyllyottstheatre.co.uk 01707 645005



Photograph shows one of our open days with people trying their hand at bowls.



Howzat in the Caribbean?

A few years ago, I was invited to umpire on a cricket tour to the Caribbean with a UK Seniors side, part of the over-forty-nines structure that now includes over 50, 60 and 70 age groups. We flew from Gatwick to Antigua in mid-October for the Sir Vivian Richards Masters tournament. The flight was smooth until landing, when the pilot suddenly aborted the approach due to a dangerous tailwind. As he explained, "If we had landed, we could have ended up in the sea". My wife, feeling decidedly unwell, declared she would never fly again.

On arrival we stepped into torrential 'liquid sunshine', though spirits lifted as a steel band greeted us with Raindrops Keep Falling on My Head. Our beachside accommodation became home for the next two weeks. We played five matches: three against English county senior sides and two Caribbean teams. At the Sir Vivian Richards Stadium, it quickly became clear that our hosts had a different definition of 'senior', fielding players mostly in their late thirties. Our youngest was 57, with many well into their sixties and seventies, making the contest rather uneven despite our best efforts.

One memorable umpiring moment involved the scorers, positioned in a box above the main stand. Each time I signalled, the acknowledgement light appeared from a different place. Eventually I learned the switch was broken and they were using a torch instead.

Despite the challenges, we relished the chance to play in an international stadium. We met Sir Vivian Richards and enjoyed a cricket tea prepared by Mrs Curtley Ambrose. Antigua proved a beautiful island – well worth visiting, whether or not you are a cricketer.

The Secret Umpire



..... **Wyllyotts**
Theatre

Flowers and Friendship Bracelets

Thursday 27th August, 6pm
Tickets £27.50

Children's Digital Film Workshop

Monday 24th to Friday 28th August, 9am–4pm
Tickets £250

Dom Joly - Trigger Happy TV 25th Anniversary Tour

Sunday 13th September, 7pm
Tickets from £28

An Evening with Henry Cole

Wednesday 30th October, 7.30pm
Tickets £31, Concessions £28.50

James B Partridge - Primary School Bangers Tour 2026

Sunday 4th October, 8pm
Tickets £31–£34

Jack and the Beanstalk

Friday 11th to Thursday 31st December
Various times and ticket prices

WYLLYOTTS BOX OFFICE 01707 645005

Potters Bar, HERTS

For all shows and film listings wyllyottstheatre.co.uk

JOHN POWELL

Carpets

CARPETS, VINYL, RUGS, WOOD FLOORS & BLINDS

104-106 HIGH STREET POTTERS BAR HERTS EN6 5AT
TEL: 01707 654304 / 01707644012 FAX: 01707 649195

EMAIL: john@johnpowellcarpets.co.uk
WEB: www.johnpowellcarpets.co.uk

Discover Pickleball at Potters Bar Tennis Club!



Curious about Pickleball? Come and join us for a fun and friendly intro-session! Whether you're a seasoned player or a complete beginner, Pickleball is a fantastic way to get active, meet new friends, and enjoy

one of the fastest-growing sports in the UK.

Why Pickleball? Fast to learn – Most players pick up the basics in under 20 minutes.

- **Great for all ages** – From teens to retirees, everyone can play together.
- **Social and friendly** – Meet new people, make friends, and enjoy a welcoming community.
- **Fantastic exercise** – Improve fitness without the strain of high impact sports.
- **Affordable** – up to 3 free taster sessions – then great value low-cost Pickleball membership.

When: Group sessions Mondays and Wednesdays, 2–4pm. (Courts can also be booked by members at other times).

Where: Potters Bar Tennis Club.

No equipment? No problem! We'll provide everything you need to get started.

Free taster sessions Come along and see what the excitement is all about or email pottersbartennisclub@gmail.com for more information.

Tennis And we of course also offer tennis at Potters Bar Tennis Club! Tennis club members have free access to Pickleball and many of our members play both games.

Summer Camp Week 1: Monday 27th July to Friday 31st July.
Week 2: Monday 3rd August to Friday 7th August. For costs of courses and camps, please contact Karl Mills, Head Club Coach 07939 303483 or email pbtccoach@gmail.com.

Parent and Child Tournament Sunday 4th October 2026. Further details from Karl Mills as above.

Sue Vallance, Membership Secretary 01707 645909 or email pbtcmembership@gmail.com.

Citizens Advice Hertsmere

Renters' Rights Act is a new law for landlords, letting agents and tenants, in the private rented sector within England. These changes will affect most private tenants with an assured shorthold tenancy.

Before 1 May 2026

You can be given a section 21 eviction notice for no reason.

There are no limits on rent in advance.

Your landlord might pressure you to agree to a rent increase at any time.

You might have a fixed term tenancy which makes it hard to leave early.

You can often give 1 months' notice to end a periodic AST.

From 1 May 2026

Your landlord will need a legal reason to evict you with a section 8 notice.

Your landlord can only ask for 1 month's rent in advance.

Your landlord can only put the rent up once a year, giving at least 2 months' notice.

You will have a periodic tenancy which makes it easier to leave by giving notice.

At least 2 months' notice required to end a periodic assured tenancy.

Landlords cannot discriminate against tenants who receive benefits or have children and must consider requests from tenants who wish to keep a pet.

For more information see www.citizensadvice.org.uk/housing.

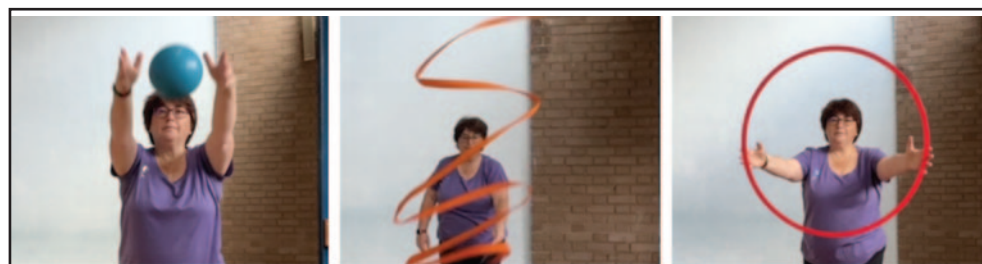
Awaab's Law was introduced in October 2025 and requires social housing landlords to deal quickly with hazards such as damp and mould.

If you have damp or mould:

- Report it to your landlord.
- The landlord must investigate within 10 working days and make it safe within a further 5 working days.
- If this does not happen, use your landlord's complaints process.
- If the issue continues, Citizens Advice may be able to help.

If you need support on these or other issues, please contact us www.citizensadvice.org.uk/local/hertsmere or Advice Line 0800 144 8848.

Editor: A fuller version of this article appears on our website.



EXERCISE TO MUSIC - MEDAU MOVEMENT WITH TRACY

WEDNESDAY AFTERNOON, 2.15-3.15 PM
Elm Court Youth and Community Centre Potters Bar

WEDNESDAY MORNING, 10-11 AM
Trinity Church, Freston Gardens, Cockfosters

www.exercisewithtracy.co.uk or scan
the QR Code

Email: exercisewithtracy@gmail.com

PROFESSIONAL PLASTERER

All aspects of interior and exterior plastering carried out by a reliable, quality Tradesman

- Rendering • Skimming • Cornices and Arches
- Pebble Dashing • Artexing • Skimming over Artex
- Ceilings • Over 30 years experience
- Free estimates – NO OBLIGATION!

07947 174623 | 01707 664815

edwardjgalligan4@gmail.com



LOCAL ELECTRICIAN

Security Lights • Extra Sockets • Emergencies
Re-wires • Spots • Consumer Units etc

Call Simon George - MGR Sparx Ltd - Mount Grace Road, Potters Bar

01707 858906 or 07917 198684



Astro and Drones at Photographic Society

At Potters Bar and District Photographic Society we have continued to offer our members an interesting range of activities. Recent speakers have covered the world of Astro Photography, when we were shown some stunning photos of the universe. Most importantly these did not require specialist, and often expensive, equipment – just the kind of kit that many amateur photographers already own.

Next the camera was in the sky, looking down. Photography from drones is becoming increasingly popular and available to all, and this talk explained the details and legal needs of flying drones and what you can

and, as importantly, what you cannot do with them. Some stunning photos of locations as far apart as London and the Scottish Highlands showed what can be achieved.

There were also regular competitions, a presentation on project-based documentary photography (which even made the North Circular Road seem attractive!), a successful exhibition of nearly 90 prints at the Galleria in Hatfield and a smaller show at Wyllyotts in June. All this and an enjoyable fund-raising Quiz Night too, the Society is very definitely active.

New members are very welcome to visit up to three times before deciding whether to join, or not. Society meetings are held at Wyllyotts Theatre on Monday evenings from 7.30pm. Full programme information can be found at pottersbarphotosoc.org.uk or on Facebook.



Let's go to the pictures!

That's what we said when my brother and I were kids and there was a good film on at the local cinema where we lived in Harringay. Now our choice of film is much different but it's still good to 'go to the pictures', and Wyllyotts keeps up with the latest films. But have you ever thought about going to the Potters Bar Filmmakers public show in October each year? Have a look at the posters for details.

PBFM meet every other Thursday evening in The Wyllyotts Centre and are a group of very enthusiastic filmmakers. It's not the usually expected 'baby on the lawn' stuff but good dramas, entertaining holiday films of places that some of us have never heard of, let alone gone to, plus a competition which changes subject each year, and an open competition that will be on any subject that will not fit in with the other film categories. Some of our members do not make films but are interested in anything filmic and even take part in some of the films as actors. Even so, they are all welcome and often produce a good script or story for the club to make into a film.

If you have loads of film and don't know what to do with it but don't want to delete it all, why not come along and let us help you with what to keep and what to get rid of.

We recently made a club film that had you guessing right up until the very end. We meet in the Wyllyotts Centre on alternate Thursday evenings starting at 7pm, so come along and see if you like us and what we do.

Sebby's Corner charity: No child should go without

Sebby's Corner, based in Barnet, supports vulnerable families and children under 10 living in poverty across London and the Southeast, including Potters Bar. Founded five years ago, the charity provides essentials such as nappies, baby formula, equipment, clothing, school uniforms, and birthday gifts. They believe every child deserves the essentials for a healthy, happy life. Many families helped are experiencing homelessness, fleeing domestic violence, seeking asylum, or living in poverty. Referrals are made by frontline professionals like social workers, midwives, and health visitors, ensuring support reaches those most in need. With over 1,000 referral partners, Sebby's Corner helps stabilise families by meeting immediate material needs, reducing stress, and improving wellbeing.

The charity offers hospital bags for vulnerable mothers-to-be, birthday club gifts, school uniform support, and festive Christmas shops. You can help by donating funds, becoming a regular donor, gifting new and pre-loved items, or purchasing from their Amazon wish list. Essential items include toiletries, nappies, infant medicines, feeding bottles and more. Donations of new or gently used clothing, toys and equipment are welcome, but please check the website for guidelines. All toys must have a CE label, and clothes must be clean and in good condition.

Any support is greatly appreciated and directly benefits families in need. If you require help, contact your health visitor or school.

Tel: 020 3475 7071 | Email: info@sebbyscorner.co.uk
www.sebbyscorner.co.uk | Registered charity: 1196472

Editor: a fuller version of this article appears on our website.



Kingsbridge
Wills, Trusts & Estate Planning

Wills & Estate Planning

FREE ADVICE FOR HOME OWNERS

- Protect your home and legacy for your children
- Keep your hard earned cash within the family
- Stop your home from being sold to pay for long term Care Fees
- Prevent the Courts from making financial and healthcare decisions on your behalf
- Thousands of outdated wills are successfully challenged every year - is yours up to date and water tight?
- Ensure your parents' and other family members' homes are fully protected
- Lasting Powers of Attorney ensure your "voice is heard". **Essential** when dealing with banks & the NHS. Vital when dealing with Life Sustaining Treatment.

DON'T PUT IT OFF - Don't let your home, assets and savings disappear!

Call 01707 957000 or Text 07973 175882

Email advice@kingsbridgewills.co.uk for more information or to book a **FREE meeting** with Graham in the comfort of your own home.

Evening and weekend appointments welcome.



Graham Martin

The Players

THE CUFFLEY PLAYERS

The Cuffley Players welcome new members from Cuffley and the surrounding area, both on stage and behind the scenes. Rehearsals are held Monday and Thursday evenings at Cuffley Hall – so why not come along and join us?

Generally, we put on 2 productions a year and rehearse Monday and Thursday evenings at Cuffley Hall from 7.45pm. However, this year we are ringing the changes and putting on an extra production for 3 performances only on Thursday 23rd and Friday 24th July at 8pm with a matinee performance at 2pm on Saturday 25th July.

The play is called '12 Incompetent Jurors', a fast-paced comedy spoof packed with eccentric characters, ridiculous arguments and courtroom chaos that audiences of all ages will enjoy.

In what should be an open-and-shut catnapping case, one stubborn juror refuses to accept the obvious verdict, sending the jury room into complete confusion.

Performances take place at **Cuffley Hall, Maynard Place, EN6 4JA** on Thursday 23rd and Friday 24th July at 8pm, with a Saturday matinee on 25th July at 2pm.

Tickets only £12, from www.cuffleyplayers.co.uk or telephone **07857 841930**.

Dance Scottish in Potters Bar!

Have you done the Dashing White Sergeant at a barn dance or the Eightsome Reel at a wedding? At South East Herts Scottish Country Dance Society (SEHSCDS) we do the same sort of dances, but with a bit more polish. Scottish country dancing is a social form of dance relying on mutual co-operation, and following the patterns of the dance together is highly satisfying.



Scientific research has shown that dance can have a positive effect on our quality of life. It has also found that the movements in Scottish country dancing are particularly helpful in maintaining fitness whatever your age, training the nerves and muscles and keeping the body mobile. Read more here www.rscds.org/about/health-strategy/health-benefits-scd.

SEHSCDS has been running classes for nearly 70 years. We have a regular class in Hertford, and last September we restarted a class in Potters Bar. We are an enthusiastic group of dancers, meeting at the United Reformed Church Hall, Darkes Lane, Potters Bar on Thursday evenings. We have room for more and are inviting you to come along for a free evening on Thursday 17th September 2026 from 7.30pm to 8.45pm. Try Scottish country dancing for yourself and meet our teachers, completely free of charge. We also have a stall at Tesco on Saturday 12th September, so come and say hello to us there!

You don't need a kilt, you don't need to be Scottish, and you don't need a partner; just soft flat shoes and a willingness to have a go. Classes cost £15 per half term (reductions if you are between 18 and 25). SEHSCDS is affiliated to the Royal Scottish Country Dance Society (a Scottish registered charity).

To find out more, please visit www.rscdsherts.org/south-east-herts or email us on sehscds@hotmail.com.

Your home Your care Your choice



a alina homecare

Care at Home

Award winning home care makes life easier.

We can help your loved one stay independent in their own home.

Regular visits, overnight, respite & live-in care available.

Let's chat...

0208 801 9844

alinahomecare.com



Top 20 UK Home Care Group Award 2021 - 2025



Opportunities at Community Music School

Potters Bar Community Music School is a co-operative of local parents, teachers, and musicians. Our staff are professional musicians with years of teaching experience and full DBS. We are open from 8:30am till 1pm on Saturdays at Gracewood Academy (formerly Mount Grace). Our dates are on our website www.pbcms.org.uk.

News this term is that our new Starter Wind Band has taken off and already thriving under the leadership of Michele Combes. More children are joining every week! We welcome any child who has been learning for a few terms and can play over 5 notes – grade 2+. We have the capacity to train them through our ensembles to post grade 8 level. We have a proud tradition of inclusivity.

PBCMS now have three levels of string orchestras, 3 chamber groups for advanced players, 3 levels of wind band, a free choir for any age or experience, and an inclusive adult Chamber Orchestra of all standards. Our three more experienced orchestras combine to make a Full Orchestra at the end of term; a rare opportunity for all generations to play music together. We also have individual lessons for children over 6 years old. The waiting list is long for piano but short for more unusual instruments such as double



bass and bassoon, for which scholarships may be available on application. Email admin@pbcms.org.uk.

Our concert is on 11th July at Gracewood Academy. Here is a picture of our beginner ensembles.

Performances by Capital Arts Children



Seven children from the Capital Arts Children's Choir performed their last opera for Ellen Kent Opera on Wednesday April 22nd at Richmond Theatre.

This year represents the 'farewell tour' of the outstanding Ellen Kent Opera company. Capital Arts has worked with the company for nine years and is currently working with top children's theatrical agencies auditioning talented singers for Angelic Voices, its professional soloists' group. Angelic Voices is rehearsing for a concert at Earl Spencer's London residence, Spencer House, plus a charity concert at the actors' church, St Paul's Covent Garden.

Hearts in Art Exhibition/Sale

We are holding our annual Hearts in Art Exhibition/Sale on Sunday 11th October at Elm Court. There are a variety of stalls covering all forms of art and crafts by local people.

We do have spaces available and if there are any artists or crafters out there who would like to show their works, then why not join us and book a stall. The cost is £20 for a table and chairs are provided.

If you would like more information, please contact us by email suedeb.james1@btinternet.com.



FANTASTIC DAY TRIPS & HOLIDAYS

BY LUXURY COACH PICKING UP IN POTTERS BAR & THE DUTCH NURSERY, BROOKMANS PARK AL9 6ND WHERE WITH FREE PARKING

RHS FLOWER SHOW AT
BADMINGTON HOUSE, GLOUCESTER
Thursday 9th July £70
A DAY IN BOURNEMOUTH
Saturday 18th July £40
LEEDS CASTLE, KENT
Wednesday 29th July £70
HENLEY JAZZ CRUISE WITH
AFTERNOON TEA
Sunday 9th August £90
THE POPPY LINE STEAM TRAIN NORFOLK
Wednesday 12th August £65
HOVERCRAFT CRAFT TRIP
TO ISLE OF WIGHT
Saturday 15th August £80

THE EASTBOURNE AIRSHOW
Sunday 16th August £40
80'S DISCO CRUISE WITH BUFFET
Friday 21st August £90
CHATSWORTH HOUSE or THE HEIGHTS
OF ABRAHAM IN DERBYSHIRE
Sunday 23rd August £80
JESUS CHRIST SUPERSTAR AT THE LONDON
PALLADIUM
Monday 24th August £115
FAVERSHAM & WHITSTABLE
Saturday 29th August £42
BRADERIE DE LILLE IN FRANCE
Saturday 5th September £105
HENLEY JAZZ CRUISE
Sunday 6th September £90

BUCKINGHAM PALACE TOUR
Thursday 13th September £80
'THE REPAIR SHOP' OR CHICHESTER
Thursday 17th September £70 / £40
SOUTHWOLD ONE LAST SPLASH!
Saturday 26th September £44
EMMA BRIDGEWATER FACTORY TOUR &
POTTERY PAINTING EXPERIENCE
Saturday 3rd October from £60
THURSFORD CHRISTMAS SPECTACULAR
WITH CHRISTMAS DINNER IN NORFOLK
Tuesday 10th November £125
CHATSWORTH CHRISTMAS MARKET
Thursday 12th November £80
ELY CATHEDRAL CHRISTMAS MARKET
Thursday 19th November £60

07354 903222 WWW.ORANGEHENN.CO.UK



Potters Bar Theatre Company presents
the heartfelt comedy

THE GREAT BRITISH BAKE OFF MUSICAL

Book and Lyrics by Jake Brunger
Music and Lyrics by Pippa Cleary

The Great British Bake-Off television programme produced by Love Productions Ltd
Original Theme Music by Tom Howe
The Great British Bake-Off is a registered trademark of Love Productions Ltd
Originally produced in London at the Noel Coward
Theatre by Mark Goucher Productions

**Wyllyotts
Theatre**
10th-14th November 2026
7:30pm Sat Mat 2:30pm
BOX OFFICE
01707 645005

This amateur production is presented by arrangement with Musical Theatre International
All authorised performance materials are also supplied by MTI
www.mtishows.co.uk

The Great British Bake-Off Musical

Tuesday 10th – Saturday 14th November 2026

Potters Bar Theatre Company are thrilled to be bringing the bake-off tent to the Wyllyotts Theatre this November with *'The Great British Bake-Off Musical'* – a joyous feast of fun.

From show sketches to final bakes, this vibrant show blends laugh-out-loud comedy, showstopping songs and the heartwarming spirit you love. Follow eight fun, diverse characters as judges Pam and Phil, along with the presenters, put them through their paces whilst telling their individual stories set to a toe-tapping score.

Packed with charm, nostalgia, and a good helping of theatrical magic, *The Great British Bake-Off Musical* is the ultimate feel-good night out. Audiences are in for a sweet treat from start to finish, with unique stylised choreography, plenty of laughter and a standout cast.

Whether you're a die-hard fan or new to the tent, this deliciously entertaining show is guaranteed to leave you smiling. This is one bake you won't want to miss – tickets are on sale now!

Tuesday to Saturday evening performances 7.30pm. Saturday matinée performance 2.30pm. Tuesday: Adult £20, Child £18, Wednesday to Saturday: Adult £24, Child £18. All performances: Groups of 10+ people bought at the same time and for the same performance will receive a 10% discount at checkout.

Box Office: www.wyllyottstheatre.co.uk | 01707 645005

The Vicar of Dibley Christmas: The Second Coming

Tuesday 1st – Saturday 5th September 2026

Following Potters Bar Theatre Company's successful production of *The Vicar of Dibley* in September 2025, they are looking forward to returning to the Wyllyotts Theatre to perform the next stage adaptation, *The Vicar of Dibley Christmas: The Second Coming*. The story continues as the villagers of Dibley start the next chapter of their lives – audiences are in for an even more hilarious, chaotic, and memorable evening. Geraldine is still desperately trying to bring order out of the chaos that is the Dibley Parish Council. When Hugo and Alice return from their honeymoon, Alice finds that she is putting on weight... she turns to Geraldine for advice. After coping with the village quiz and organising the week of Radio Dibley, Geraldine is stunned when Alice actually has a good idea. What could possibly go wrong? Come along to the Wyllyotts Theatre to find out! Packed with the beloved characters from the iconic TV series, this production promises laughter, warmth, and classic Dibley mayhem – book now to avoid missing out! *The Vicar of Dibley Christmas: The Second Coming* is a stage adaptation by Ian Gower and Paul Carpenter, based on the original TV series written by Richard Curtis and Paul Mayhew-Archer. Produced by Tiger Aspect Productions.

Tuesday to Saturday evening performances 7.30pm. Saturday matinée performance 2.30pm. Tuesday to Wednesday: Adult £19, Child £16, Thursday to Saturday: Adult £21, Child £16. All performances: Groups of 10+ people bought at the same time and for the same performance will receive a 10% discount at checkout.

Box Office: www.wyllyottstheatre.co.uk | 01707 645005

Potters Bar Theatre Company proudly presents
an amateur production of

THE VICAR OF DIBLEY

Christmas
The Second Coming

A stage adaptation by Ian Gower and Paul Carpenter
Based on the original TV series
Written by Richard Curtis and Paul Mayhew-Archer
Produced by Tiger Aspect Productions

1st - 5th September 2026
at 7.30pm Sat Matinee at 2.30pm

01707645005 www.wyllyottstheatre.co.uk

The Potters Bar Society Walks to September



If you are interested in furthering your knowledge and understanding of the local environment, then these walks should appeal. Non-members are welcome but please make sure you know the protocol and walks rules. You join all the walks at your own risk. We are looking for new walks leaders to ensure the continuation of the programme. If you can help, please ring 01707 643832.

In the event of adverse weather please telephone the walks leader as the walk may have to be cancelled. In case of emergency please carry with you contact details (which can easily be found) including details of any medications and allergies that paramedics would need to make note of. Any changes to the programme will be posted on the website www.pbsoc.org.uk.

Sunday 12th July

Meet: Leeside, EN5 2PG. *Route:* Following the London Loop path through fields ascending towards Mill Hill. Return via Whitings Wood, back onto the footpaths towards Leeside. About 5 miles. *Leader:* 07492 635077.

Sunday 26th July

Meet: Whitewebbs Road, lay-by near King & Tinker PH. *Route:* Walk to Forty Hall and return via golf course. About 4 miles. *Leader:* 01707 643832.

Sunday 9th August

Meet: Café at main Cockfosters Road car park, Trent Park. *Route:* Around Trent Park (Please contact leader if you need a lift). About 4.5m. *Leader:* 01707 655732.

Sunday 23rd August

Meet: Little Berkhamstead, near Five Horseshoes Public House. *Route:* Chain walk north to Howe Green then Hertfordshire Way south to Epping Green before returning to start point via Bucks Alley Wood. About 4.6 miles. *Leader:* 01707 851498.

Sunday 6th September

Meet: Former White Hart PH, South Mimms. *Route:* Walk through woods and footpaths to North Mymms Church. About 4.5m. *Leader:* 01707 655732.

Sunday 20th September

Meet: Smallford Station Car Park, Station Road, Smallford. (If coming from the A414, turn immediate left after the bridge before reaching the A1057, Hatfield Road.) *Route:* Disused railway line, Alban Way and footpaths to Colney Heath, returning via Ellenbrook Fields and Cowper Green Lane to pick up disused railway line back to car park. About 4.5 miles. *Leader:* 01707 654993.

For all your design and printing requirements

Ushers
PRINT & DESIGN LTD

Quality Printing at Competitive Prices
Fast and Reliable Service

BUSINESS STATIONERY | LEAFLETS NEWSLETTERS
BOOKLETS | FOLDERS | ANNUAL REPORTS | POSTERS
BROCHURES | MAIL SHOT SERVICE and much more...

Tel: 01707 851242 Fax: 01707 852893 Email: ushersprint@gmail.com

Milestones for Hertfordshire Health Walks

In the year to the end of March, 589 walks were delivered in Herts mere, with an incredible 7,593 attendances. More importantly, walkers tell us the programme is changing their lives. Twelve months after registering:

- 70% said they were more physically active
- 65% felt healthier overall
- 59% reported feeling more socially connected



These outcomes highlight the powerful role Health Walks play in improving both physical and mental wellbeing.

In April a celebration to mark 20 years of Potters Bar Health Walks was held, attended by Les Chesson, one of the founder members. Volunteers and current and past walkers met after the walk at the Admiral Byng for a welcome warm drink and cake. Claire of Hertfordshire Health Walks thanked Les for his dedication

and volunteering efforts over the many years. (*Editor: Picture shows Les and fellow volunteer, Robin.*)

The Herts mere Summer Health Walks timetables are now live (*Editor: shown on our website*). Thanks to the commitment of residents who volunteer as walk leaders and backmarker. There are 16 walks available each week – ranging from Gentle Walks for Beginners to Brisk Evening and Weekend Walks for those looking for more of a challenge. There truly is something for everyone.

To celebrate National Walking Month, a Mass Health Walk was held early in May, with 20 walks taking place across Hertfordshire. It was a brilliant opportunity for people to try a walk close to home and experience the benefits for themselves.

We are also actively recruiting new volunteers. If you know someone who is enthusiastic about walking and giving back to their community, we'd love to hear from them. Our short walk, on Fridays at 11am from the Harvester at Oakmere Park could really do with some more volunteer support. Our next volunteer training session takes place on Thursday 10th July in Hatfield. Contact Claire on claire.pullen@hertfordshire.gov.uk to book a place or to find out more.

LOCAL ORGANISATIONS

The following information accurately reflects the details provided to us at time of publication. Any subsequent changes will be shown immediately on www.pottersbarcommunitynews.co.uk.

ANIMALS

DOG TRAINING – HOME FARM Classes Tue, Wed and Fri. Obedience and socialisation. All levels welcome. One-to-one also. 275322.
RSPCA* Friends of Southridge Animal Rescue and Re-homing Centre, Packhorse Lane, Ridge.

ART

ART IN HERTS Weekly, Tue 7.30–10pm. Cranborne School, EN6 2BA. Contact suedeb.james1@btinternet.com.
CHILDREN'S FINE ART CLASSES Little Art School of Herts, Potters Bar. Ages 4–16. Tel 07907 802206.
CRAFT AND CHATTER Weekly, Mon (not during Aug). PB Baptist Church, 10.30am–12 noon. 707082.
INTERIOR DESIGN COURSES For beginners. Potters Bar. Mon 10am–1pm. 07907 802206.

BABY and TODDLER GROUPS

BABY COLLEGE Come along and try one of our classes, every Tue at South Mimms Village Hall. The UK's original award-winning fun weekly sensory and development baby classes for parents, babies and toddlers from birth to pre-school. Contact Lynn lynn@babycollege.co.uk or book a trial at www.babycollege.co.uk.
BABY RHYME TIME Every Tue 11–11.30am, Oakmere Library. No need to book.
CHARLIE'S ANGELS Weekly on Wed in term time, 1.30–3pm. For toddlers and their parents, grandparents and carers. King Charles the Martyr Church Hall. No charge, but donations welcome. 665579.

COFFEE POTS AND TINY TOTS

St Mary's Church, North Mymms, AL9 7TN, meet every Wed, school term times only, 10–11.30am in St Michael's room, playtime, singing, crafts, storytime, drinks and chats. 01727 825578 or northmymmschurch@btinternet.com.

LITTLE ELMS MONTESSORI NURSERY

Popular OUTSTANDING Montessori and Forestry Nursery at Elm Court. Age 2–5 years, term-time Mon to Fri. Nishrin 07956 505674/office.littleelms@gmail.com for more info. Funded hours available.

MOTHER AND TODDLER GROUP

Wed 1.45–3.15pm. School Hall, Essendon.
MUM AND BABY FITNESS CLASS Tue 10.15–11am, St Mary's, The Walk. 1st class free. Contact Jade on 07728 325888 or jade.suryani@gmail.com.

MUSIC BUGS ST ALBANS AND SOUTH HERTS

Parent and toddler classes. Newborn to 5 years. Wed 10am and 11am Wyllyotts Centre. 07961 778349 or stalbans@musicbugs.co.uk.

PARENT AND TODDLER GROUP

Weekly, term time, Tue 10–11.30am. Causeway Community Church. 660021.

STORYTIME FOR TODDLERS

Thu 11–11.30am Oakmere Library. No need to book.

TINY TALK BABY SINGING CLASSES

Tue 1.30pm Clayton Centre, Barnet Road, PB. Newborn to age 2. Cost £9. Book in advance via jennylittlewood@tinytalk.co.uk.

CHURCHES TOGETHER

Co-ordination organisation for local churches. For information and details of individual churches visit www.ctpb.org.uk.

CHURCHES – Café

COFFEE MORNING PB Baptist Church. Fri at 10.30am. Pam 07721 665187.
COMMUNITY CAFÉ AT KCM Weekly Thu. King Charles the Martyr Church Hall, 10.45am–1.30pm. Coffee and light lunches served. 665579.
COMPASSIONATE CAFÉ Wed 10–12 noon at Christ Church, Little Heath. An open invitation for anyone affected by bereavement or any type of loss. compassionate@peacehospice.org.uk. 01923 330330.

MUSIC RECITAL 12.15pm followed by CHARITY LUNCH 1.15pm, 1st Fri in month, URC Darkes Lane. Come and join us! 665482 or see www.pottersbarurc.org.

LIFE CAFÉ Thu and Fri 9am–12 noon. Profits to various charities. Life Church – Cuffley. 876060.

LOAVES AND FISHES CAFÉ Weekly, Wed. Christchurch, Little Heath, 8.45am–12 noon. All welcome 662460 or www.cclh.org.uk.

DANCE

ANGIE'S DANCE ACADEMY UK

Weekly classes for adults and kids. Line Dancing, Solo Latin and Pop Dance. Line Dancing: Beginners Mon 6–7pm, Elm Court. Beginners plus Mon 10–11am, South Mimms Village Hall. Improvers Wed 7.30–9pm, Potters Bar Baptist Church. Solo Latin Dance Thu 7–8pm, North Mymms Memorial Hall. Pop Dance: for kids aged 4–11, Potters Bar Baptist Church. www.angiesdanceacademyuk.co.uk, Admin@angiesdanceacademyuk.co.uk or 07773 341490.

LIZZIE MEEKS SCHOOL OF DANCE

Ballet, Tap, Jazz, Contemporary, Hip Hop/Street Dance. Adult's and children's classes Mon to Fri. info@lizziemeksschoolofdance.com or 07887 567713.

NICK'S DANCE SCHOOL BALLROOM AND LATIN CLASSES

Weekly Adult classes Mon, Little Heath. Children's classes Mon. Little Heath. Contact Terri 07711 832070 or www.nicksdanceschool.com.

BALLROOM SOCIAL DANCE. Every Wed 8–10pm, tea, coffee and biscuits included at North Mymms Memorial Hall. Contact Russel on 07702 746795.

BALLROOM SOCIAL/PRACTICE DANCE FOR COUPLES

North Mymms Memorial Hall, Station Road, Welham Green, AL9 7PG. Fri 8–10pm. Refreshments provided. Ballroom and Latin. For more info 07711 832070 or admin@nicksdanceschool.com.

FOOTLOOSE ROCKS – ROCK AND ROLL DANCE

Mon 6.15–8.15pm. Elm Court. Call Polly 07791 243848.

FOOTLOOSE STROLLING Fri 1.30–3.30pm. Elm Court. Call Polly 07791 243848.

FRIDAY FOLK Social Folk Dancing Club. Fri 7.45–10pm. St Albans. www.fridayfolk.org.uk.

LINE DANCING Mon 1.30pm–3.30pm at King Charles the Martyr. Improver to Intermediate. Award Winning Instructor and Choreographers Alison and Peter Metelnick 07967 964962.

LINE DANCING Wed 1.45–3.30pm.

King Charles the Martyr. Contact Val Hamby (preferable by text) 07946 703628.

MOUNTVIEW DANCE SCHOOL

ISTD Cecchetti ballet classes from 3+ years at St John's Church Hall, Baker Street, for boys and girls. Weekly Mon and Sat classes with regular examinations. la_christian@tiscali.co.uk or www.mountviewdanceschool.co.uk.

SCOTTISH COUNTRY DANCING

HERTSMERE AND TALL HO REEL CLUB Tilbury Hall, Darkes Lane EN6 1BZ, 7–10pm. Generally 3rd Sat in Feb, Apr, Jul, Oct and Nov – check with Secretary. Members £8, Non-members £10 at the door. Secretary Margaret King 020 8440 3236 or margaret.king4@hotmail.co.uk.

TEA DANCE

1st Sat in the month. Starts 2–4pm. Tea at 3pm. Ballroom, Latin, Sequence, some Line. Contact 07702 746795.

WAGGONERS SQUARE DANCE CLUB

Weekly, Mon 7.30–10pm at St Joseph's in the Park School Hall, Heringfordbury. Janet 01992 441083.

EDUCATIONAL

COMPUTERS AND A CUPPA 1st and 3rd Mon of each month. Wyllyotts Cafe, 10.30am–12.30pm. Helping older people use their IT devices. Free.

FIRST CLASS LEARNING MATHS AND ENGLISH

Ages 5–16, weekly, Sat 10am–1pm, Thu 4–5pm. St Mary's Church Hall. Tim and Caroline 07708 655554 or www.firstclasslearning.co.uk/potters-bar.

KUMON MATHS AND ENGLISH

Ages 4–18. Mon 3.15–5pm and Thu 3.15–5.30pm at Elm Court. Sheena 643588.

UNIVERSITY OF THE THIRD AGE – PB U3A

Over 600 members and 50 interest groups for recreation and study for those not in full-time employment. pbu3a.org.uk or 07544 263356.

FITNESS

BALLROOM BLAST! FITNESS LIFE

Low impact class that's gentle on your joints, but strengthens muscles, burns calories. Light-hearted and fun. Weekly, St Mary's Church Hall, The Walk, PB. Mon 10.30–11.45am. Call or text Terri 07711 832070 or www.nicksdanceschool.com.

BALLROOM BLAST! FITNESS AND TONE

Energetic ballroom-based workout that gets your heart pumping, your muscles toned and your body moving to feel-good music. Weekly, North Mymms Memorial Hall, Welham Green. Tue 6pm. Call or text Terri 07711 832070 or www.nicksdanceschool.com.

BOUNCE POTTERS BAR

Oakmere School, Chase Avenue, EN6 5NP. Barbells Tue 6.30pm and Sun 9am. Bounce Blast Tue 7.30pm. Call Natalie 07715 884168.

CHAIR YOGA

Yoga inspired chair exercises to improve strength, balance and flexibility. Tue 10–10.45am, Wyllyotts. Contact Marina marina@yogabhaya.co.uk, 07990 647874 or visit www.yogabhaya.co.uk for more info.

EXERCISE, MOVEMENT AND DANCE

TO MUSIC A different exercise and movement to music class created each week just for you. Wed 2.15–3.45pm, Elm Court.

www.exercisewithtracy.co.uk. Call or text 07949 055958 or email exercisewithtracy@gmail.com.

FITNESS CLASSES in LBPT Private Gym, The Walk, Potters Bar. Mon and Wed at 7.45pm. Ring to book 07403 625771. Suitable for all levels and abilities.

YOGA FOR MENTAL WELLBEING

PB classes, weekly Tue, Thu, Fri, Sat. Small, friendly group exploring slow, steady practices including postures, breath work and guided relaxations. Beginners welcome. Yoga to reduce anxiety, stress, fatigue and depression for all ages and abilities. helencooperiyoga@gmail.com or 07740 823230.

MEN'S FITNESS GROUP FOR OVER 50s

All levels of fitness and abilities welcome. Tue and Fri 10–11am at King Charles the Martyr Church Hall.

MOVES FITNESS

Weekly, Mon. St Mary's Church Hall, 7.30–8.30pm. Aerobic Dance Exercise. All fitness levels welcome. Bring mat or towel. 07733 173559.

PILATES CLASS

Fri 11am. Little Heath Parish Hall, Thornton Road. £10 per class. Call Kasia 07789 987797.

POSITIVE MOVEMENT EXERCISE CLASS

Tue 10.30am–12 noon, Clayton Centre. Positive for older people, carers, people at risk of falls. 01462 678804.

YOGA CLASSES Promoting a well-rounded and joyful approach to yoga with gentle and effective practices for body and mind. Everyone welcome. Mon 11.45am–12.45pm Elm Court. More info www.pranasanayoga.com. Call Matt to book 07974 340685.

YOGA AND PILATES At No. 10 private sessions in Yoga, Pilates, Reformer Pilates and Yoga Therapy. Teacher trainings and workshops. New studio, No. 10 Greenleaf House, EN6 1AE. Mon 10am and 6pm. Tue 7.30pm, Wed 10am and 12.30pm, Fri 9.45am and 12pm, Sat 9.30am, Sun 10am. Contact Jade on 07976 743189.

YOGA CLASSES Mixed Ability Slow Hatha Yoga Fridays 10–11.15am. Classes (£10) are small and include pranayama (breathwork) and a short meditation or guided visualisation. Details on www.yoga-reiki.co.uk or contact Feride on 07538 778844 or feride@yoga-reiki.co.uk.

YOGA CLASSES A seasoned yoga teacher, multicultural and multilingual. I help people of all ages and backgrounds enrich their lives by promoting a well-rounded and joyful approach. More info www.pranasanayoga.com. Call Dorna to book 07961 479878.

YOGA FOR BEGINNERS Join Karen Sat 9–10am at Elm Court. For new and improvers. £10 per class, 50p booking fee. To book www.happyyoga.co.uk. Contact Karen 07947 376628 or karen.keeman@btpenworld.com.

YOGA FOR HEALTH, WELLBEING AND SELF-CARE

Slow Flow Hatha and Yin/Restorative Yoga, Breathwork and Meditation. All ages, fitness, size, ability, and flexibility welcome. Boost physical and mental health. Info and bookings www.yoga2you.co.uk or 07788 550024.

LOCAL ORGANISATIONS

ZUMBA GOLD Mon 6.15pm, North Mymms Memorial Hall, Welham Green. Wed 10.45am, Elm Court. Thu 10am, Elm Court. Sat 9.30am, Little Heath Parish Hall. Sue Purdie 07956 338561.

GAMES

BRIDGE CLUB – LITTLE HEATH

(duplicate) Tue 7pm in Parish Hall. Alison 873908 or Peter 851010.

BRIDGE CLUB Thu 10am–1pm. Little Heath Parish Hall. Playing Chicago Bridge. John McAllister 07752 640910.

BRIDGE CLUB Mon 7.15–9.30pm at Wyllyotts Centre. Nick 07879 580447.

BRIDGE CLUB – OLOA DUPLICATE

Thu 1–4pm. Our Lady & St Vincent Church, Mutton Lane. Contact Eleanor 650376 or Margaret 658054.

FIRST WEDNESDAY CHESS –

POTTERS BAR Meet the 1st Wed of each month 6–9pm in The Old Manor, Wyllyotts Place. Contact Robin on Instagram or Facebook (First Wednesday Chess).

LITTLE HEATH CHESS CLUB Juniors, Thu 5.45–7.15pm. Adult players welcome for matches. Chris 851455.

HEALTH

ALCOHOLICS ANONYMOUS

Frequent meetings in Potters Bar and local area. Call 0800 9177650 or email help@aamaal.org.

CARERS IN HERTFORDSHIRE

Contact 01992 586969 for info.

CHERRY LODGE CANCER CARE

Contact Tina on 020 8441 7000 for more info.

CIRCLE FOR THE BLIND AND

PARTIALLY SIGHTED (PB THEATRE COMPANY) Dress rehearsals for shows and quarterly evening socials at Furzeffield Court. Evenings. 657194.

DEMENTIA SUPPORT – HERTSWISE

Every Thu 2–4pm, St John's Church, Baker Street, PB. For people living with dementia, low level memory loss or mild cognitive impairment, and their friends, family and carers. £5 contribution. Carers welcome at no extra charge. 0300 123 4044 for info.

DEMENTIA FRIENDLY WORSHIP

1st Mon of every month at 2pm, held at Our Lady & St Vincent Church, Mutton Lane.

HEART THROBS EXERCISE AND

SUPPORT GROUP 10am and 11am Mon, Wed and Fri at Holtwhites Club, 1 Kirkland Road, EN2 0RN. 5pm Mon at St Stephen's Church Hall, Village Road, EN1 2EU. 10am Tue and Thu "at home" via Zoom. Contact 07938 926772 or www.heart-throbs.org.uk.

HERTS MIND NETWORK

Tue fortnightly, 11am–1pm, Memory Support Group, appointment only £1, Goodacre Court, EN6 5AZ. Tue weekly, 9am–5pm, Peer Support, appointment only, Maple House, EN6 5BS. Contact 020 3727 3600.

HERTS VISION LOSS 2 Brownfields, Welwyn Garden City, AL7 1AN. Sight Line 324680, Office@hertsvisionloss.org.uk or www.Hertsvisionloss.org.uk.

OSTOFRIENDS – STOMA SUPPORT

GROUP Social chat and activities. Meet 1st Wed of each month (excluding Jan and Aug) at 10.30am–12.30pm at Our Lady & St Vincent RC Church, EN6 2AT. 07596 748376 or ostofriends@gmail.com www.ostofriends.co.uk.

RENNIE GROVE PEACE HOSPICE CARE

Compassionate Support Hub will be open every 2nd Thu of the month from 10am–12 noon. Wyllyotts Centre. www.renniegrovepeace.org/compassionatesupporthubs.

HOBBIES

BARNET AND DISTRICT PHILATELIC

SOCIETY Mon 8pm. Twice monthly. St John's Church Hall, Mowbray Road, New Barnet. Sep to Jun. www.barnetphilatelic.org.uk.

CAKE DECORATING

Potters Bar Sugar Art Club. Monthly, 1st Mon 7.30pm. Furzeffield Court, Mutton Lane.

Call Francesca 07923 630811 or francescakhaliq@hotmail.com.

COIN COLLECTORS

Interested in forming a club covering Herts and North London? Contact William Braithwaite 643153.

CUFFLEY FLORAL ART CLUB*

Monthly, 2nd Tue 7 for 7.30pm. Cuffley Hall, Maynards Place, EN6 4JA. Contact 889447 for info.

MERLIN MAGICAL SOCIETY

Fortnightly, Thu 7.45pm. Little Heath Parish Hall, including beginners. John Clayton 07931 525399. www.merlinmagicalsociety.com.

NORTH MYMMS HORTICULTURAL

SOCIETY North Mymms Youth and Community Centre, Station Road, Welham Green. Adrian 885430.

PB AND DISTRICT HISTORICAL

Meetings start promptly at 8pm. United Reform Church, Darks Lane, EN6. Please come and join us; Visitors £2 members £1. Call 07856 513814 or visit www.pottersbarmuseum.org.uk.

PB AND DISTRICT PHOTOGRAPHIC

SOCIETY Weekly, Mon 7.45–9.45pm. Wyllyotts Centre. Any standard welcome. 01438 832504.

PB ALLOTMENT ASSOCIATION

Visit Highview Gardens site, Sun (Nov to Apr), 10.30am–12 noon, (May to Oct) 9.30am–12.30pm. Email Allie.pbaa@outlook.com.

PB FILMMAKERS*

Alternate Thu, 7pm, Wyllyotts Centre. 656446 or 659888. There are no meetings in Jan or Aug.

PB MUSEUM

Open Sat. 11am–1pm. Tue and Wed 2.30–4.30pm Wyllyotts Centre. For info 07856 513814 or pottersbarmuseum.org.uk.

MUSIC

ATTIC ORCHESTRA For those who wish to resume playing. Mel on melroot@hotmail.com.

BAY JAZZ CLUB

1st and 3rd Tue, 12.30–3pm. Botany Bay Cricket Club, East Lodge Lane, Enfield. Live Traditional Jazz. Licensed Bar. Stephen 020 8363 0838.

JAZZ – GOOGLIES JAZZ CLUB

Live Jazz every Thu at Googlies Jazz Supper Club, 7.30pm. Botany Bay Cricket Club, East Lodge Lane, EN2 8AS. Reservation for entry or meals required, £12–15. John 020 8350 3541, email googliesjazz@btinternet.com or www.googliesjazz.co.uk.

CAPITAL ARTS CHILDRENS CHOIR

Fri at 4.30pm. Wyllyotts Centre. Capitalarts.org.uk or capitalarts@outlook.com.

COMMUNITY CHOIR

Weekly, Thu. Wyllyotts Theatre, 7–9pm. For info Wyllyotts 645005.

HERTS PHILHARMONIA ORCHESTRA

Rehearsal on a Thu 7.30–10pm in Welwyn Garden City. Concerts performed regularly in Potters Bar. For info email info@hertspphil.org.uk or www.hertspphil.org.uk. Follow us on Facebook.

HERTFORDSHIRE SHOWBAND

Rehearsals every Mon at Mount Grace School.

Junior Division: 7–8.45pm. Showband: 7.30–9.30pm. Call Richard 07500 258038 or visit www.hertfordshire-showband.org.

PB CHORAL SOCIETY*

Weekly rehearsals, Tue 8–10pm. St Mary's Hall, The Walk. Experience not essential. 642393 or info@pbchoral.org. See www.pbchoral.org.

PB COMMUNITY MUSIC SCHOOL

Sat from 8.30–11.30am at Mount Grace School. 6 orchestras, singing and individual woodwind lessons. www.pbcmcs.org.uk. Also available "Da Capo": a small chamber orchestra for adults of all standards. 9.45–10.30am on Sat. admin@pbcmcs.org.uk.

PB TOWN BAND

Weekly rehearsals, Fri 8–10pm. Goffs Oak Methodist Church.

Traditional brass band. 07970 448661.

RADLETT MUSIC CLUB

6 concerts per season, Oct to Apr. Radlett Centre, 8pm. Online booking www.radlettcentre.co.uk.

SOUTH HERTS MUSIC CENTRE

Weekly, Sat in term time, 8.30am–1pm. Cuffley School, EN6 4HN. Individual instrumental lessons and group activities. Contact 270025 or SouthHertsMusicEnquiries@hertfordshire.gov.uk, www.hertsmusicservice.org.uk.

OUTDOOR

BARNET LIVING STREETS

Focuses on walking routes within the London Borough of Barnet out into Hertfordshire, towards Borehamwood, PB and South Mimms. Barnetgroup@livingstreets.org.uk.

BARNET WALKS*

Guided Barnet and North London walks. £12 (£5 under 12s). Contact Paul for more info 07506 761294.

GOBIONS WOOD NATURE RESERVE OF

HERTS AND MIDDLESEX WILDLIFE TRUST

For info contact 01727 858901.

HERTSMERE HEALTH WALKS

Gentle and moderate walks for all. Further info on www.hertfordshire.gov.uk/healthwalks.

NORTH LONDON OUTDOOR GROUP

Weekends away, day and evening walks. 2nd Tue 8.15pm at Discovery Hall, Stevenson Close, New Barnet. www.northlondonoutdoorgroup.org.

NORTHAW COMMUNITY ORCHARD

Between 47 and 49 Northaw Road West, Northaw EN6 4NP. Open 24/7. Help-out in the Orchard sessions generally 10.30am–1pm, 1st Sat of the month and Thu mid-month 1.30–4pm (see Events page on website). For details of times and other events see our website www.northaworchard.com or email northaworchard@gmail.com.

NORTHAW GREAT WOOD

Working parties every Fri at 9.30am and 1st Sun each month. Meet wood car park. 07850 233854.

POTTERS BAR HEALTH WALKS

Weekly on Mon and Wed (level 2 and 3 walks) from 10.30am. Meet at Potters Bar Railway Station Memorial Garden, beside the station entrance and adjacent to Holland and Barrett, EN6 1AJ. Fri (First Steps walk) from 11am, meet at Oakmere Library High Street.

PB RAMBLING CLUB

Weekly, Wed and alternate Sun 10.30am. Meet start of walk. For info contact John on 658389 or visit www.pbrc.org.uk.

PB SOCIETY WALKS*

Fortnightly, Sun afternoon walks along local rights of way. www.pbsoc.org.uk.

RSPB POTTERS BAR AND BARNET

LOCAL GROUP* Illustrated talks, Fri 7.30pm.

Our Lady & St Vincent Church, Mutton Lane, EN6 2AT. RSPB members £5, others £5.50. Wed at St John's URC Hall, New Barnet, 2pm. RSPB members £4.50, others £5. Also coach outings to nature reserves, check website for details.

www.group.rspb.org.uk/pottersbarandbarnet or Facebook @PBandBarnet or 662914.

LOCAL ORGANISATIONS

WEDNESDAY COMMUNITY CLUB* Wed 2–4pm. PB Baptist Church. Contact Eve Cuthbert 07855 455212.

SPORT – Indoor

BADMINTON CLUB Little Heath Church Hall, Thu 7.30pm. All abilities welcome. 657812.

BADMINTON CLUB (FRIERN) Friendly club for intermediate players. The Hive at the McDonalds Centre, Hatfield, Wed 8pm. Richard.szyczak@corderoy.com.

BADMINTON LADIES Weekly, Wed 2–4pm. Christ Church, Little Heath. Friendly, social group. 657199.

OAKLANDS BADMINTON CLUB Mount Grace School, Tue 8–9.30pm. Friendly Club for Intermediate Players, age 18+. Oaklandsb77@gmail.com.

BARRACUDA SWIMMING CLUB Weekly, Sun. Furzeffield Centre, 11.30am–12.30pm. Helps all ages with disabilities to be safe in the water. 07716 863822 or secretary.barracuda.sc@hotmail.co.uk.

BOWLS CLUB Short mat bowls at Cuffley Hall. Equipment and instruction provided. Contact jaholding@hotmail.co.uk.

GENERATION PLUS (formerly 50+). Sporting and social activities for older adults and those new to exercise, etc. Wide range of activities eg keep fit, Pilates, table tennis, pickleball at local venues. For details visit www.inspireall.com/generation-plus.

PB GYMNASTICS CLUB Recreational (4–12 years). Mon 5.15pm, Furzeffield Centre. Squad training 6–13 years, Tue, Thu and Fri 5.30pm, and Sat 9am Chancellor's School. 01923 855598.

PB LIFESAVING CLUB Weekly, Tue, Rookie Lifeguard, (children under 12), 7–8pm. Survive and Save (children 12 and over), 8–9pm. Furzeffield Centre. 020 8440 3346.

SAPPHIRE SKATERS – ROLLER SKATING Roller skating lessons and parties, Sat 9–10am for all ages. Tue 5.30pm for ages 4–18. www.sapphireskaters.co.uk, email sapphireskaters@gmail.com, 07714 267855 or facebook/instagram: sapphireskaters.

SNOOKER Kidston Institute, 7 Northaw Road West. New members of all standards welcome. £52 annual membership allows unlimited use of the table (outside of Pre-School hours). More info at www.kidstoninstitute.uk.

ST ALBANS AND HERTSMERE CANOE CLUB Furzeffield Centre. Thu. Youth 8.15–9.15pm, Adult 9.15–10.15pm. Learn relevant skills and play canoe polo. Beginners welcome, all equipment provided. Contact gerry.metcalfe@gmail.com.

TABLE TENNIS Kidston Institute, 7 Northaw Road West. New members of all standards welcome, including league players. £52 annual membership allows unlimited use of the table (outside of Pre-School hours). More info at www.kidstoninstitute.uk.

TABLE TENNIS Barnet Lane, EN5 2DN. www.bttc.co.uk or 020 8449 7845. Non-members welcome.

TABLE TENNIS CLUB Weekly, Wed, Thu and Fri matches only at Potters Bar Free Church, Mimms Hall Road, Barnet. Shaw and North Middlesex Leagues. 07585 974224.

SWIFTS JUNIOR BADMINTON Weekly, Fri, term-time. Hatfield Leisure Centre, 4–7pm, 5–18 years. Beginners to county standard. 550476.

SPORT – Outdoor

BOTANY BAY PETANQUE CLUB Sun, Wed and Fri at 10.30am. Botany Bay Cricket Club. Try the French game of Boules. 020 8366 5954.

BROOKMANS PARK TENNIS CLUB Golf Club Road, Brookmans Park. 6 courts with floodlights. Suit all abilities. 644926.

ENFIELD CROQUET CLUB New members welcome as well as anyone who would like to try the game. More info at www.enfieldcroquet.org or email enfieldcroquetclub@outlook.com.

ELIZABETH ALLEN FOOTBALL CLUB Weekly, Sat pm. Old Owen's, Coopers Lane Road, EN6 4NE. 852422.

FOOTBALL (WALKING) Furzeffield Centre, over 50s all welcome Thu 2pm, 1st session free 850500.

GENERATION PLUS (FORMERLY 50+) Sporting and social activities for older adults and those new to exercise, etc. Wide range of activities (eg walking football and netball, croquet). Visit www.generation-plus.com for details.

JUNIOR PARK RUN Free for 4–14 year olds (younger or older siblings can join in but won't get a time or place. Parents can also run with their child). Sun 8.45am for 9am start. Meet behind Furzeffield Centre. More information on www.parkrun.org.uk/furzeffieldleisurecentre-juniors.

LITTLE LIONESSES Girls football: Tots 2–3, Minis 4–6, Mighties 7 years+. Chancellors School. Sun; Tots, 10am–10.30am; Minis, 10.35am–11.15am; Mighties, 11.20am–12 noon. Contact little_lionesses@outlook.com or 07843 859231.

NORTH MYMMS BOWLS CLUB Dellsome Lane, Welham Green. 645320 or www.northmymmsbowlsclub.org.

NORTHAW AND CUFFLEY BOWLS CLUB King George V Playing Fields, Northaw Road East, Cuffley. 876262.

OLD OWENS CRICKET CLUB Coopers Lane, Potters Bar. Herts Saracen League. 644211. www.oldowenscricketclub.co.uk. Venue hire also available.

PB BOWLS CLUB The Walk. 07870 991048 or pbmembershipsec@gmail.com.

PB CRICKET CLUB The Walk. New members welcome. 654801.

PB CRUSADERS SPORTS AND SOCIAL CLUB Members Club. See www.pbcrusaders.org.uk for opening times. Club Steward 07754 027821.

PB CRUSADERS YOUTH FOOTBALL Football for boys and girls aged 4–18. Email Dan Pbcboysfc@yahoo.com.

POTTERS BAR CYCLING CLUB Weekly Sun mornings covering 50–70k starting from Little Heath. Also participation in one-off special rides and sportives. www.pbicyclingclub.co.uk.

PB HOCKEY CLUB Ladies, men and junior hockey at Dame Alice Owen's Astro turf pitch. Paul on 07398 988502 or juniors@pottersbarhockey.club.

PB PÉTANQUE PLAYERS Tue from 2pm, Sun from 10am new and all ability players welcome. The Pétanque area is behind the Harvester pub garden, High Street. Pay and display car park at Oakmere Park. Jane Larmour 266517 or www.pottersbarpetanque.co.uk.

PB TENNIS CLUB The Walk. 6 Astro turf courts all with floodlights. Membership enquiries to Sue Vallance 645909.

www.clubspark.lta.org.uk/pottersbartennisclub. **PB TOWN FOOTBALL CLUB** Parkfield. Matches Sat 3pm. Some Sun and midweek. Training Tue and Thu, 7.30pm. 07833 632965.

PB UNITED FOOTBALL CLUB PB based grassroots football club established 1975. U5 to U18 age groups for boys and girls teams playing in various Hertfordshire leagues. More info info@pottersbarunited.co.uk.

SKATING – INLINE SKATER HOCKEY Weekly, Thu 6–7.15pm, Sat 12 noon–1pm. Learn to skate as well as skater hockey. For all 5–18 years. Hatfield Leisure Centre. bwcrusaders@hotmail.co.uk.

SPORT – Martial Arts

CHI KUNG CLASS Weekly, Mon 6.30–7.30pm. North Mymms Social Club, Welham Green. Sat 11am–12 noon at PB Health Club. Organised by 'Just Standing'. 272255.

NINTAI KARATE CLUB Weekly Fri 7–8pm at Revive Fitness and Spa, Potters Bar Golf Club, EN6 1DE. Contact 07942 362000.

PB SHOKOTAN KARATE CLUB Furzeffield Centre, Wed Juniors 7–8pm, Adults 8–9pm. Sunday Black and Brown belt class 12 noon–1pm. www.karatemasters.co.uk.

THEATRE

CUFFLEY PLAYERS Amateur Dramatic Society. Rehearsals Mon and Thu. 2 plays a year Mar and Nov at Cuffley Hall. Fran 872229 or 07811 437791. Email info@cuffleyplayers.co.uk.

ENFIELD LIGHT OPERATIC AND DRAMATIC SOCIETY Weekly, Tue and Fri 8pm. Drama group rehearse Winchmore Hill. Performs Wyllyotts. 2 musicals per year. 07711 316474.

GREEN ROOM PRODUCTIONS Rehearsals Mon at King Charles the Martyr Church Hall. Wed at Oakmere School. www.greenroomproductions.co.uk.

POTTERS BAR THEATRE COMPANY Rehearsals Tue and Fri at Chancellors School. info@pottersbartheatrecompany.co.uk.

YOUTH

AIR TRAINING CORPS – 57 (PB) SQUADRON Weekly, Mon and Thu. Ingram Cadet Centre (opposite Fire Station). 7.15–9.30pm. Ages 12–18. oc.57@rafoc.mod.gov.uk.

CAPITAL ARTS THEATRE SCHOOL Sun, 2–5.30pm, Wyllyotts Centre. Professional performances. Capitalarts.org.uk or capitalarts@outlook.com.

GUIDES, BROWNIES AND RAINBOWS Potters Bar and Brookmans Park areas. www.girlguiding.org.uk/get-involved or Sue 850147.

HERTS YOUNG HOMELESS info@hyh.org.uk, community@hyh.org.uk or 03333 202 384.

NORTH MYMMS YOUTH AND COMMUNITY CENTRE Station Road, Welham Green. nmycc.uk. 515650.

NORTH MYMMS YOUTH PROJECT Activities, trips and weekly meetings for youngsters 9–16 years. D of E for ages 14+. www.nmyouth.org.uk or 515513.

RAZZAMATAZ Weekly, Thu. Mount Grace School. 4–18 years. Dance, drama and singing. 07788 592171.

SCOUTS, CUBS AND BEAVERS

For info contact Jim Heatley via secretary@pbscouts.org.uk.

STAGECOACH THEATRE ARTS SCHOOL Weekly, Sat. Chancellor's School. 4–18 years. Dance, drama and singing. 01582 713771.

TOP HAT STAGE SCHOOL Weekly, Fri. Elm Court. 4–17 years. Dance (tap), drama and singing. 4.30–7.30pm. 01727 812666.

YOUTH CLUB PB Free Church, Mimms Hall Road. 5–11 years. 6.15–7.30pm. 07880 965546.

SERVICES FOR YOUNG PEOPLE

Various youth projects, term-time at Elm Court. sfyp.herts@hertfordshire.gov.uk.

MISCELLANEOUS

CAUSEWAY COMMUNITY CHURCH The Causeway. Every Sun at 10.30am.

COUNTRYSIDE MANAGEMENT SERVICE Environment Department, County Hall, Pegs Lane, Hertford. 01923 588433.

HUMANISTS – NORTH LONDON GROUP Monthly, 3rd Thu. Ruth Winston House, Palmers Green. 653667.

POTTERS BAR ISLAMIC COMMUNITY CENTRE Every Wed 3.30–6.30pm at Wayside Jubilee Centre. Contact Zain Anhar 07939 057094 or Mahbub Alam 07951 200655. Email info@pbicc.org or www.pbicc.org.

POTTERS BAR AND BROOKMANS PARK SYNAGOGUE Contact office@pottersbarshul.org.uk. www.pottersbarshul.org.uk.

ST JOHN AMBULANCE – PB DIVISION Weekly, Wed 8–10pm. The Walk. First aid training 664260. Room hire 656885.

WHITWEBBS MUSEUM OF TRANSPORT AND MODEL RAILWAY, ENFIELD, EN2 9HW Weekly, Tue from 10am–4pm. Last entry 3pm. Adults £9, children (aged 5–12) £3. 020 8367 1898.

WSRA SPEEDWAY MUSEUM Hertfordshire Zoo, EN10 7QA. Contact Alan Philpott 07939 287573.

NORTH LONDON AND MIDDLESEX MORRIS MINORS OWNER'S CLUB Meet at the Whitwebbs Museum every 2nd Thu from 7.30pm. christinenlmmoc@gmail.com.

NORTH MYMMS MEMORIAL HALL Station Road, Welham Green, AL9 7PG. 07948 310192 or www.northmymmsmemorialhall.co.uk.

PB SOCIETY Local amenity, environmental, conservation and heritage group. Contact Paul 07906 505167 or see www.pbso.org.uk.

All telephone numbers are area code 01707 unless otherwise stated.

Tell us about your event, meeting, activity and we will publicise it and give details of your organisation in the *Community News*.

Contact susan.weaver4@ntlworld.com.

DOCTORS' SURGERY HOURS

1) ANNANDALE MEDICAL CENTRE AT THE ELMS

Tel: 01707 644451

Surgery Hours: 8am–6.30pm Monday to Friday

Test Results: 01707 644451 (11am–3pm)

Referral and Medical Reports: 01707 644451 (8.30am–1.30pm)

Extended Hours – see below. We are an Armed Forces veteran friendly accredited GP practice.

For the latest information and updates please visit our website www.annandalesurgery.co.uk. We have a Patient Group page on our website with latest events, webinars, and newsletter.

2) HIGHVIEW MEDICAL CENTRE AT THE ELMS

Tel: 01707 871980

Surgery Hours: 8am–6.30pm Monday to Friday

Appointments: 01707 871980 (8am–6.30pm)

Enquiries: 01707 871980 (11am–3pm)

Results: 01707 871980 (11am–3pm)

Extended Hours – see below.

For the latest information and updates visit our website www.highviewsurgery.co.uk or follow us on Facebook and Twitter.

3) PARKFIELD MEDICAL CENTRE

Tel: 01707 291041

Surgery Hours: 8am–6.30pm Monday to Friday

Appointments: 01707 291041 (8am–6.30pm Monday to Friday)

Test Results: 01707 291041 (12 noon–1pm Monday to Friday)

Extended Hours – see below.

4) POTTERELLS MEDICAL CENTRE

Tel: 01707 273338 | www.potterells.net

Surgery Hours: Monday 8.30am–6.30pm; Tuesday 8.30am–9pm;

Wednesday, Thursday and Friday 8.30am–6.30pm.

Extended Hours – see below.

EXTENDED HOURS

There is an extended hours appointment hub available covering all 4 surgeries. Your appointment may be on another premises – you will be advised when booking.

OUT OF HOURS SERVICE FOR ALL THE ABOVE SURGERIES

Local residents can arrange routine evening and weekend appointments – contact your surgery.

NHS 111 SERVICE

If you urgently need medical help or advice but it's not a life-threatening situation, call NHS on 111, at any time.

DENTIST

When you have an urgent dental problem and your dental surgery is closed, call NHS 111. Monday to Friday, 5pm–9am. All weekend and Bank Holidays.

Local A&E Services

BARNET: Wellhouse Lane, Barnet, EN5 3DJ Tel 020 8216 4600

LISTER: Coreys Mill Lane, Stevenage, SG1 4AB Tel 01438 314333

URGENT CARE – Minor Injuries and Illnesses

QE2: Howlands, Welwyn Garden City, AL7 4HQ Tel 01438 314333 8am–10pm

CHASE FARM: The Ridgway, Enfield, EN2 8JL Tel 020 8375 1010 8am–7.30pm

BARNET: Wellhouse Lane, Barnet, EN5 3DJ Tel 020 8216 4600 8am to midnight

Local Libraries

Oakmere

High Street, Potters Bar

Monday 1pm–6pm

Tuesday 10am–6pm

Wednesday CLOSED

Thursday 10am–6pm

Friday 1pm–6pm

Saturday 10am–5pm

Sunday CLOSED

Brookmans Park

Bradmore Green

Monday 2pm–5.30pm

Tuesday 2pm–5.30pm

Wednesday CLOSED

Thursday 2pm–5.30pm

Friday 2pm–5.30pm

Saturday 9.30am–12.30pm

Sunday CLOSED

For further information, visit your local library or call **0300 123 4049** and ask for appropriate library. **NB: Welwyn Garden City library is open on Sunday afternoons.**

Useful Numbers

Hertsmere Borough Council	020 8207 2277
Welwyn Hatfield Council	01707 357000
Hertfordshire Police Non-emergency	101 (national number) or 01707 354000
Herts Domestic Violence Helpline	0808 808 8088
Hertfordshire County Council	0300 123 4040
National Debt Line	0808 808 4000
Citizens Advice Consumer Helpline	0808 223 1133
Highways (including potholes, traffic light faults and streetlights)	0300 1234 047
Wasteaware	0300 1234 051
Affinity water leaks	0345 357 2407
Childline	0800 1111
Crime Stoppers Anonymous Line	0800 555 111
CAB Advice Line	0800 144 8884
Environmental Health	
(1) Hertsmere:	Pest Control 020 8207 2277
	Noise (daytime) 020 8207 7435
	(night) 0845 300 0021
(2) Welwyn Hatfield:	Pest Control 01462 421579
	Noise 01707 357242
Potters Bar Hospital	01707 653286
NHS Direct (Nurse advice and health information)	111
Samaritans (freecall 24 hours)	116 123



Office open every Wednesday from
10am to 12.30pm

Hertsmere

Please call advice line **0800 144 8884**
Wyllotts Centre, Darkes Lane, EN6 2HN